



Ministry of  
**JUSTICE**

# SENTENCING STATISTICS QUARTERLY BRIEF England and Wales

October to December 2007  
(Crown Court and magistrates'  
courts)

Ministry of Justice  
Statistics bulletin

## SENTENCING STATISTICS QUARTERLY BRIEF, ENGLAND AND WALES – FOURTH QUARTER 2007

### KEY POINTS

All key points highlighted below are for indictable offences and are comparisons with the fourth quarter of 2006.

#### **All courts**

- The number sentenced for indictable offences across all age groups was 77,500, up 8.8 per cent on a year earlier.
- Sentencing trends overall followed the pattern of recent quarters, with an increase in the use of suspended sentences and immediate custody and decreases for other types of sentence. The fine rate was 14.9 per cent, down 1.3 percentage points. The community sentence rate was 33.1 per cent, down 0.6 percentage points. The immediate custody rate was 24.5 per cent, up 0.2 percentage points. The suspended sentence rate was 9.1 per cent, up 0.8 percentage points.
- The average custodial sentence length was 15.6 months, down 1.3 per cent from 15.8 months in the fourth quarter of 2006. This figure excludes the growing number of life/indeterminate sentences.
- There was an increase in numbers sentenced for the offence groups violence against the person, sexual offences, burglary, robbery, theft and handling stolen goods, fraud and forgery and drug offences. The largest percentage increase was for drug offences, up 30.1 per cent on the fourth quarter of 2006. The numbers sentenced decreased for the offence groups: criminal damage - down 7.5 per cent; indictable motoring offences; and other indictable offences.

#### **Magistrates' courts**

- There were 58,000 people sentenced at magistrates courts, up 8.6 per cent on the same period in 2006.
- There were increases in the use of immediate custody, up 0.3 percentage points to 13.8 per cent and suspended sentences, up 0.1 percentage point to 5.6 per cent. The use of community sentences remained virtually unchanged at 38.4 per cent and the fine rate dropped by 1.6 percentage points to 19.3 per cent.
- The average custodial sentence length remained stable at 2.8 months, down 0.1 per cent from a year earlier but the same level as throughout 2007.

#### **Crown Court**

- There were 19,500 persons sentenced at Crown Courts an increase of 9.5 per cent.
- There was a continued increase in the use of suspended sentences up 2.6 percentage points to 19.6 per cent. There was a slight decrease in the fine rate, down by 0.1 percentage points to 1.8 per cent. The immediate custody rate dropped by 0.5 percentage points to 56.3 per cent, and there was a drop in the community sentence rate, down 2.3 percentage points to 17.3 per cent.
- The average custodial sentence length was down 3.1 per cent from 25.7 to 24.9 months (this excludes the growing number of life/indeterminate sentences).

## SENTENCING STATISTICS (ENGLAND AND WALES)

---

### LATEST QUARTER PRESENTED:

October to December 2007 (CROWN COURT AND MAGISTRATES' COURTS)

---

### Introduction

This publication has been prepared by Offender Management & Sentencing Analytical Services (formerly RDS NOMS) - Sentencing Statistics and NOMS Projections, to provide the latest trends in sentencing in England and Wales, based on provisional sentencing data. Key statistics presented are set in the context of sentencing patterns over the last 5 years (since 2002). It considers the total numbers sentenced for indictable offences in all courts as well as a breakdown for magistrates' courts and the Crown Court. The focus is primarily on use of fines, community sentences, immediate custody, suspended sentences and average custodial sentence lengths (ACSL) (which exclude life and indeterminate sentences). Information by offence type and for individual sentences is provided in the appendix.

**All figures relate to indictable only and triable-either-way offences** (taken together these are known as indictable offences).

Statistics quoted in this publication for 2007 are **provisional**. Final 2007 data will be published in the annual bulletin of sentencing statistics at the end of the year. This provisional data may change in future quarterly briefs.

### Data sources

The source of the data for this publication is the Courts Proceedings Database, which covers details of every individual sentenced. Data referring to magistrates' courts comes either directly from magistrates' court computer systems or from police forces. Data on the Crown Court comes from the Court Service's CREST computer system.

All the statistics shown relate to the principal offence. This is the one attracting the heaviest sentence.

Although care is taken in processing and analysing the returns, the detail collected is subject to the inaccuracies inherent in any large scale recording system. Therefore, although figures in this report are shown to the last digit, the figures are not necessarily accurate to the last digit shown. Average custodial sentence lengths are extracted to one decimal place.

### Definitions

<b>Juveniles</b>	: offenders aged 10-17 at sentence
<b>Young adults</b>	: offenders aged 18-20 at sentence
<b>Adults</b>	: offenders aged 21 or over at sentence
<b>Average custodial sentence length</b>	: this excludes life and other indeterminate sentences

Offenders receiving an indeterminate sentence of Imprisonment for Public Protection (IPP) for a serious offence would previously have received a lengthy determinate sentence that would have been included in the calculation of average custodial sentence length. These longer sentences are now effectively excluded from the calculation. The IPPs are given for the more serious offences. Therefore, this may result in a decrease in average custodial sentence lengths of more serious offences sentenced at the Crown Court.

**Indictable only offences** and **triable-either-way offences** are listed in Appendix 4 of Sentencing Statistics England and Wales 2006. This publication is available at <http://www.justice.gov.uk/publications/sentencingannual.htm>

**Immediate custodial sentences** include S90-92 PCC(S) Act 2000, detention and training orders, young offender institution, unsuspended imprisonment, intermittent custody, extended sentences for public protection<sup>1</sup> and indeterminate sentences for public protection<sup>1</sup>.

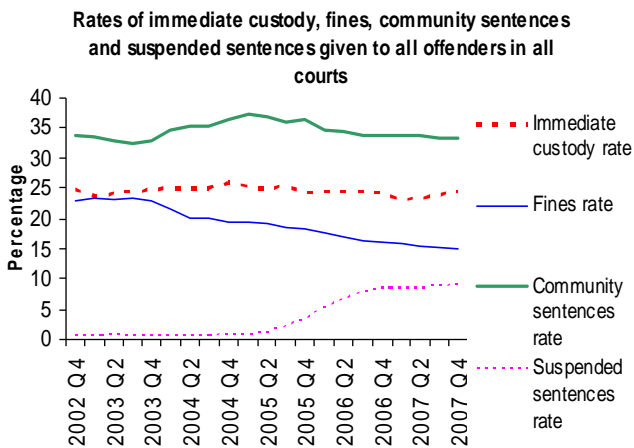
**Community sentences** include community rehabilitation orders, supervision orders, community punishment orders, attendance centre orders, community punishment and rehabilitation orders, curfew orders, reparation orders, action plan orders, drug treatment and testing orders, referral orders and community orders<sup>1</sup>.

**Suspended sentences** include fully suspended sentences and suspended sentence orders<sup>1</sup>.

---

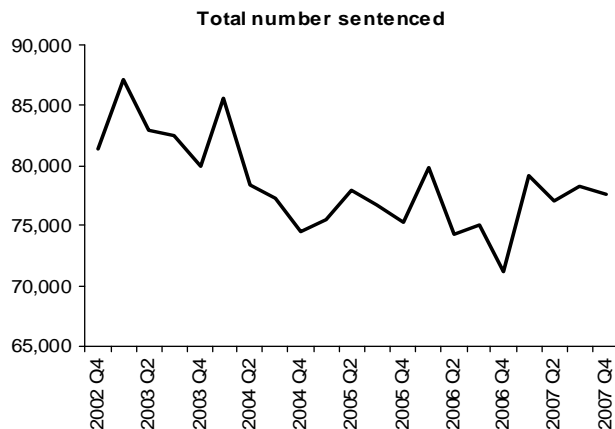
<sup>1</sup> Introduced by the Criminal Justice Act 2003 for offences committed on or after 4 April 2005

## All Courts – Overall Trends



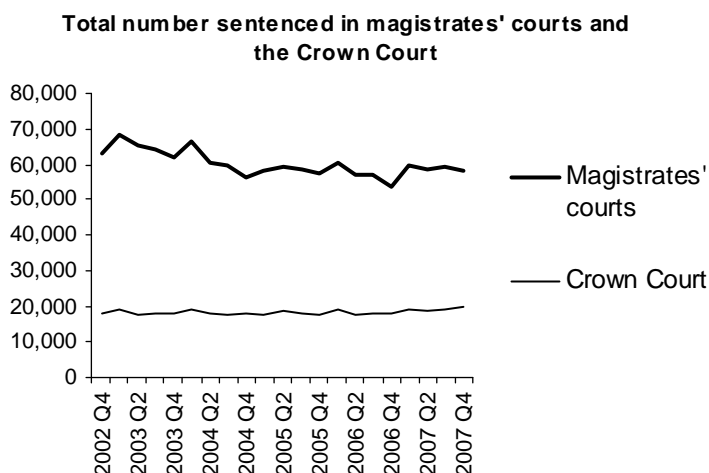
- Across all courts the immediate custody rate increased by 0.2 percentage points to 24.5 per cent.
- The fine rate was 14.9 per cent, down 1.3 percentage points from a year earlier.
- The suspended sentence rate was 9.1 per cent, up 0.8 percentage points from a year earlier, and up from 3.3 per cent in the same quarter of 2005.
- The community sentence rate was 33.1 per cent down 0.6 percentage points on 2006.
- The average custodial sentence length was 15.6 months, down 1.3 per cent from 15.8 months in 2006.

## All Courts – Total Number Sentenced



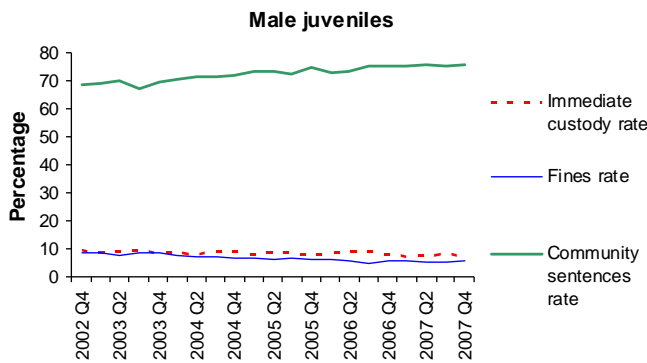
- The number sentenced for indictable offences across all age groups and courts was 77,500 in the fourth quarter of 2007, up 8.8 per cent on a year earlier.
- The trend has fluctuated since its peak of over 80,000 in 2004. However the figure has remained around 78,000 throughout 2007.

## Magistrates' Courts and the Crown Court – Total Number Sentenced



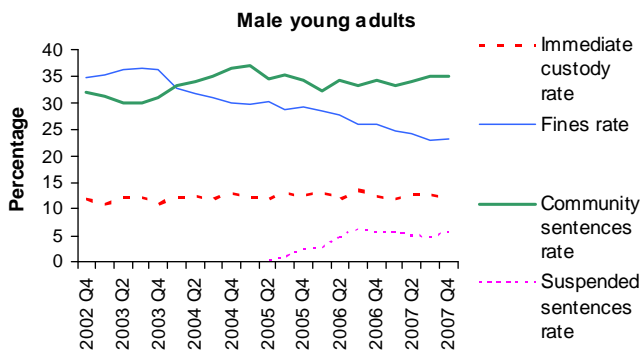
- There were 58,000 offenders sentenced at magistrates' courts this quarter, a rise of 8.6 per cent on the same quarter of 2006. Of all those sentenced 75 per cent were at magistrates courts.
- The Crown Court sentenced 19,500 offenders a rise of 9.5 per cent on a year ago.

## Magistrates' Courts – Male Juveniles



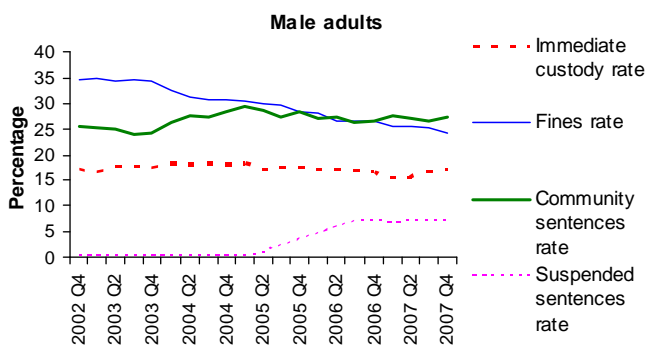
- There were 9,900 male juveniles sentenced at the Youth Court in the fourth quarter of 2007, up 2.7 per cent on a year earlier, but the lowest for any quarter in 2007.
- Community sentences were given to 75.4 per cent of offenders a rise of 0.6 percentage points on 2006. The fine rate rose 0.1 percentage point to 5.6 per cent. The immediate custody rate fell 0.7 percentage points to 7.4 per cent.
- The immediate custody rate has continued to fall from a peak of 9.7 per cent in 2003. Despite this quarters' rise there has been a continuing downward trend in those given fines. Community sentences now account for over 75 per cent of all sentences given to male juveniles, reflecting the introduction of new types of community sentence for juveniles (action plan orders, reparation orders and referral orders etc).

## Magistrates' Courts – Male Young Adults



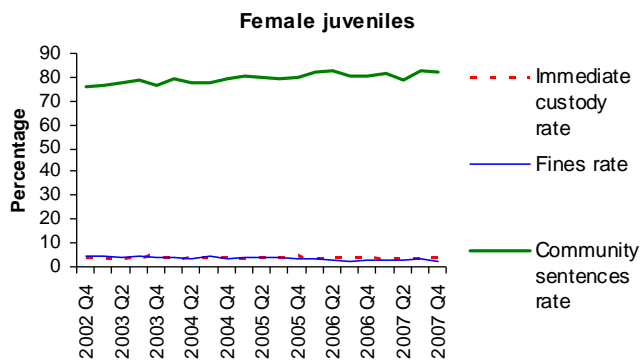
- There were 6,800 male young adults sentenced at magistrates' courts in the fourth quarter of 2007, an increase of 6.1 per cent from 2006.
- The fine rate was 23.2 per cent, down 2.5 percentage points on a year earlier. The immediate custody rate also fell from 12.4 to 12.0 per cent. The proportion of community sentences rose by 0.9 percentage points to 35.2 per cent. Since their introduction in 2005 the suspended sentence rate has continued to rise, up 0.2 percentage points to 5.6 per cent in this quarter.
- Since 2005, the immediate custody and community sentence rates have remained stable.

## Magistrates' Courts – Male Adults



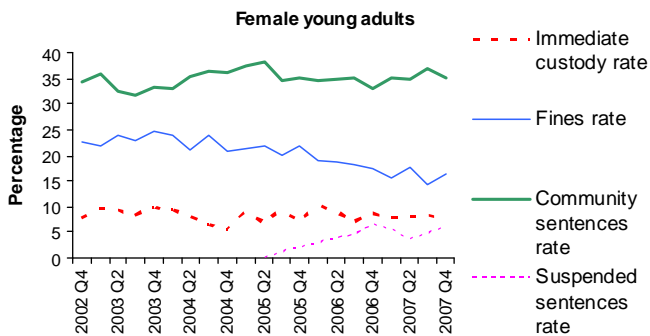
- There were 32,000 male adults sentenced at magistrates' courts in the fourth quarter of 2007, a rise of 9.6 per cent on the period in 2006. However this period in 2006 was a 10 year low.
- The immediate custody rate was 17.2 per cent, up 0.7 percentage points; the fine rate dropped 2.4 percentage points to 24.2 per cent. There was no change in the suspended sentence rates at 7.2 per cent and the community sentence rates rose 0.4 percentage points to 27.2 per cent.
- The immediate custody and community sentence rate have remained steady since 2003 while the suspended sentence rate has risen from under 1 per cent since 2004.

## Magistrates' Courts – Female Juveniles



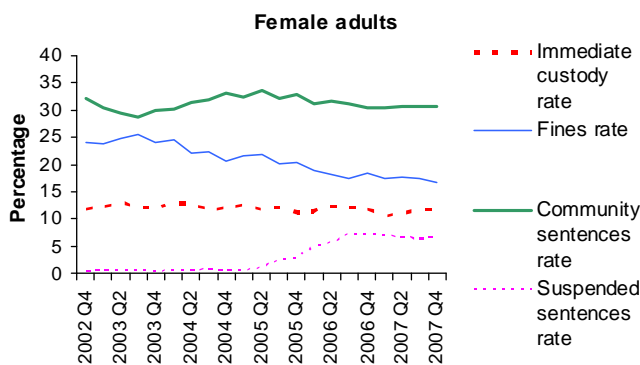
- There were 1,600 female juveniles sentenced at the Youth Court in the fourth quarter of 2007, a 0.1 per cent rise on a year earlier.
- The immediate custody rate was 3.8 per cent, down 0.3 percentage points. The community sentence rate rose 0.8 percentage points to 81.6 per cent. The fine rate dropped 0.2 percentage points to 2.3 per cent.
- The immediate custody rate has remained relatively stable throughout the last five years at around 4 per cent. The fine rate is lower than it has been in the last ten years.
- The community sentence rate continues to grow since the third quarter of 2002, reflecting the introduction of new community sentences for juveniles (action plan orders, reparation orders and referral orders etc).

## Magistrates' Courts – Female Young Adults



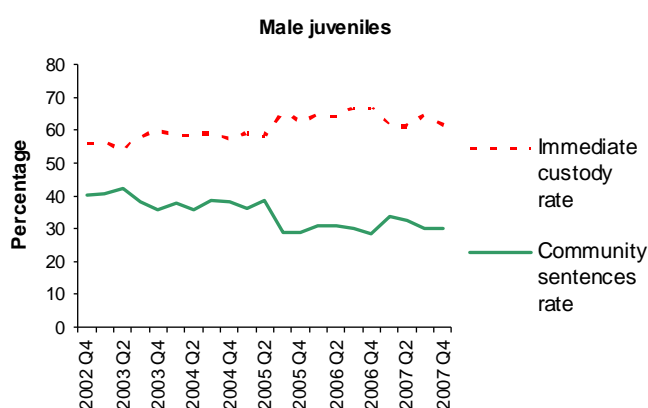
- There were 900 female young adults sentenced at magistrates' courts in the fourth quarter of 2007, up 12.4 per cent on a year earlier.
- The immediate custody rate was down 0.7 percentage points to 7.9 per cent. The community sentence rate was 35.3 per cent, a rise of 2.1 percentage points. Suspended sentences fell 0.6 percentage points to 5.9 per cent but have continued to rise throughout 2007 and from 2.2 per cent in the fourth quarter of 2005 (suspended sentences were not available for this age group prior to 2005). The fine rate fell 0.9 percentage points to 16.6 per cent.
- Throughout the last 5 years, the community sentence rate has remained consistent at around 35 per cent.
- The fine rate has fallen from 22 per cent since the introduction of suspended sentences.

## Magistrates' Courts – Female Adults



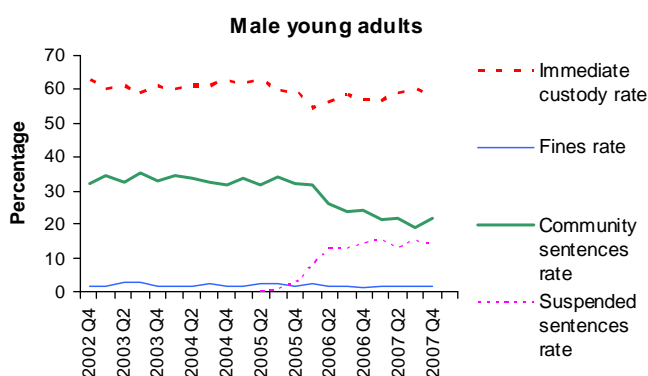
- There were 6,800 female adults sentenced at magistrates' courts in the fourth quarter of 2007, a 17.9 per cent rise on the year before. However this quarter of 2006 did have the lowest recorded number in this period.
- The immediate custodial sentence rate was 11.9 per cent, up by 0.1 percentage point. The fine rate was 16.7 per cent, down 1.6 percentage points. The community sentence rate fell 0.4 percentage points to 30.8 per cent. The suspended sentence rate was 7.0 per cent, down 0.1 percentage point.
- The community sentence rate has remained steady at around 31 per cent since 2002.
- The fine rate has steadily decreased from 20.5 per cent in the fourth quarter of 2005.
- The immediate custody rate has been stable at around 12 per cent over the past 5 years.

## Crown Court – Male Juveniles



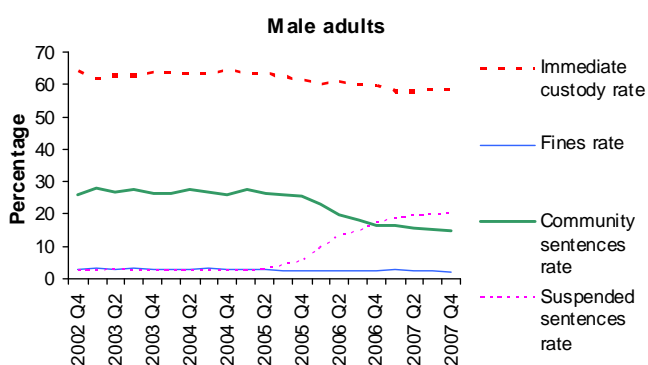
- There were 600 male juveniles sentenced at the Crown Court in the fourth quarter of 2007, up 7.2 per cent on a year earlier.
- The immediate custody rate fell 5.3 percentage points to 61.6 per cent. The community sentence rate rose 1.8 percentage points to 30.2 per cent.
- The average custodial sentence length was 20.1 months down 2.0 per cent from the previous year.

## Crown Court – Male Young Adults



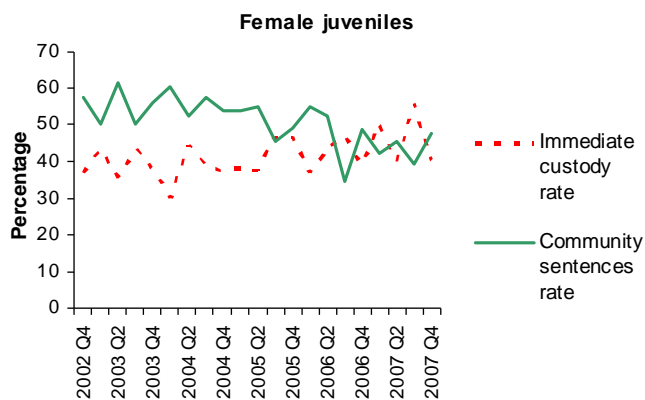
- There were 3,000 male young adults sentenced at the Crown Courts in the fourth quarter of 2007, an 8.4 per cent rise from a year earlier.
- The immediate custody rate was 58.6 per cent an increase of 1.5 percentage points compared to the previous year. The fine rate increased marginally to 1.6 per cent but has remained under 2 per cent since the start of 2006.
- The community sentence rate dropped 1.9 percentage points to 22.0 per cent. The suspended sentence rate dropped 0.4 percentage points to 13.8 per cent. However, it has risen 6.1 percentage points from the same quarter in 2005 (suspended sentences were not available for this age group prior to 2005).

## Crown Court – Male Adults



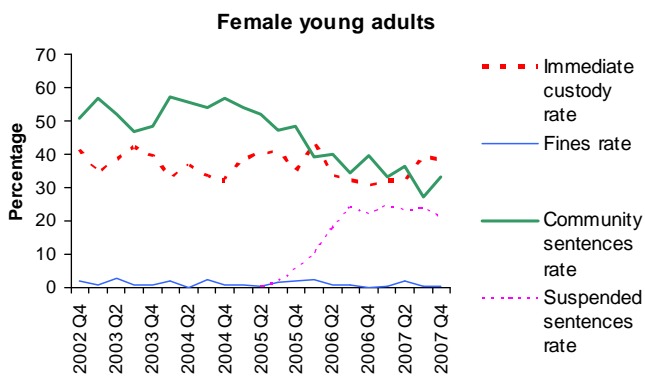
- There were 13,700 male adults sentenced at the Crown Court in the fourth quarter of 2007, up 9.3 per cent on a year earlier.
- The immediate custody rate fell 1.2 percentage points to 58.5 per cent.
- The community sentence rate was 14.7 per cent, down 2.1 percentage points. The community sentence rate has declined from 22.9 per cent since the start of 2006. The fine rate rose slightly to 2.0 per cent.
- The suspended sentence rate continues to increase, now at 20.1 per cent, a rise of 3.1 percentage points on 2006 and up from 5.6 per cent in 2005.

## Crown Court – Female Juveniles



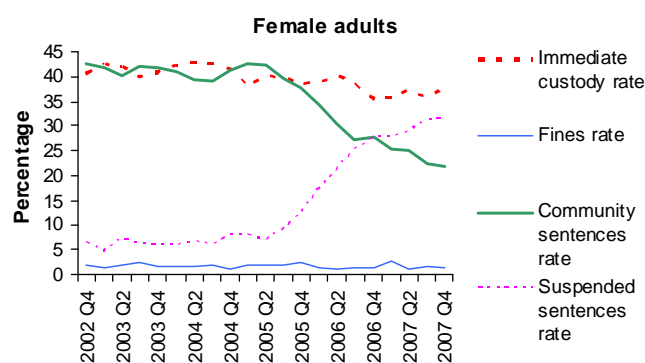
- There were just 60 female juveniles sentenced at the Crown Court in the fourth quarter of 2007, up from 50 in 2006.
- The community sentence rate was 47.4 per cent down 1.6 percentage points. There was a corresponding rise in the immediate custody rate, up to 40.4 per cent.
- Because of the small numbers involved, quarterly changes are likely to be volatile.

## Crown Court – Female Young Adults



- There were 240 female young adults sentenced at the Crown Court in the fourth quarter of 2007, exactly the same as a year earlier.
- The immediate custody rate was 38.7 per cent, an increase of 7.6 percentage points.
- The community sentence rate fell to 33.2 per cent, down by 6.3 percentage points from the previous year. The suspended sentence rate has fallen 0.8 percentage points to 21.0 per cent but has increased from 5.4 per cent in the fourth quarter of 2005 (suspended sentences were not available for this age group prior to 2005).
- Since the fourth quarter of 2005 the community sentence rate has fallen from 48.8 per cent to 33.2 per cent.

## Crown Court – Female Adults

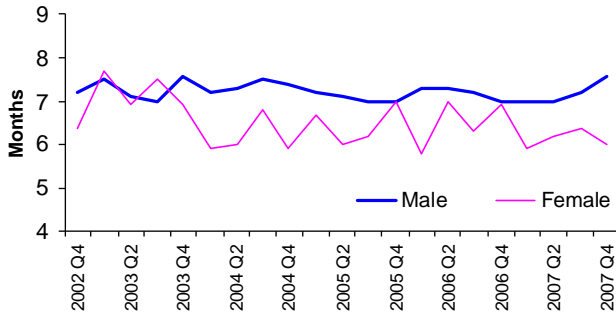


- There were 1,900 female adults sentenced at the Crown Court in the fourth quarter of 2007, up 15.5 per cent on a year earlier.
- The immediate custody rate was 37.6 per cent, up 2.3 percentage points; the fine rate rose 0.1 percentage point to 1.5 per cent.
- The community sentence rate fell 5.8 percentage points to 21.8 per cent while the suspended sentence rate increased to 31.7 per cent, up 4.1 percentage points.

## Magistrates' Courts – Males and Females

## Average Custodial Sentence Length

Average custodial sentence length for juveniles at the magistrates' courts

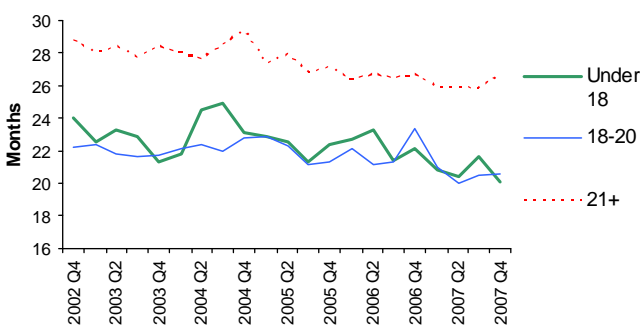


- In the fourth quarter of 2007, the average custodial sentence length (ACSL) was 7.6 months for male juveniles, up 8.6 per cent and 6.0 months for female juveniles, down 13 per cent.
- For both young adults and adult males and females, ACSLs have remained reasonably stable at between 2 and 3 months.

## Crown Court – Males

## Average Custodial Sentence Length<sup>2</sup>

Average custodial sentence length for males at the Crown Court

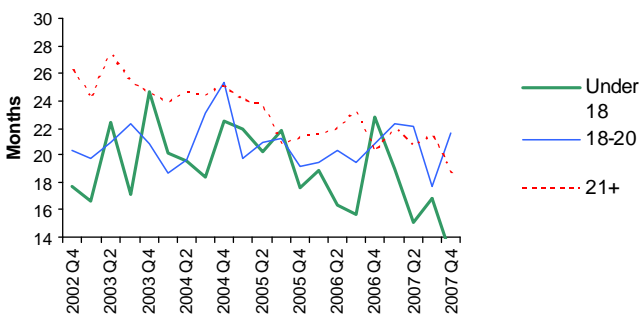


- The ACSL for male juveniles sentenced at the Crown Court was 20.1 months in the fourth quarter of 2007, down 9.0 per cent on a year earlier. The ACSL peaked at 25.0 months in the third quarter of 2004, and has continued to decrease to current levels.
- For male young adults the ACSL was 20.6 months, down 11.6 per cent from a year earlier.
- For male adults the ACSL was 26.7 months, no change from a year earlier. The ACSL for adult males has remained stable between 26 and 28 months since the fourth quarter of 2004.

## Crown Court – Females

## Average Custodial Sentence Length<sup>2</sup>

Average custodial sentence length for females at the Crown Court



- The ACSL for female juveniles sentenced at the Crown Court was 12.8 months in the third quarter of 2007, down 43.6 per cent. However, due to the small numbers of female juveniles sentenced at the Crown Court quarterly changes in the ACSL are volatile.
- For female young adults the ACSL was 21.6 months, up 3.8 per cent. The ACSL has fallen from a peak of 25.3 months in the fourth quarter of 2004.
- For female adults the ACSL fell to 18.6 months, down 7.9 per cent on a year earlier. In the fourth quarter of 2004 the ACSL was 25.0 months and this quarters' is the lowest recorded since then.

<sup>2</sup> Excludes life and indeterminate sentences. (Offenders receiving an indeterminate sentence for public protection for a serious offence committed from 4 April 2005 would previously have been included in the average custodial sentence length and are no longer. This may result in a decrease in average custodial sentence lengths).

## LIST OF TABLES

Table 1 Males sentenced by type of court, age group, type of sentence and quarter, 2005-2007

Table 2 Females sentenced by type of court, age group, type of sentence and quarter, 2005-2007

Table 3 Persons sentenced by type of court, type of sentence (detailed) and quarter, 2005-2007

Table 4 Persons sentenced at all courts by offence group and quarter, 2005-2007

Table 5 Persons sentenced at all courts by quarter, type of sentence and offence group, 2005-2007

## SYMBOLS AND CONVENTIONS

-	=	nil
..	=	not available
*	=	not applicable
0	=	less than 0.5%

## CONTACTS

Press enquiries should be directed to the Ministry of Justice press office:

- **Becky Dearden** (Senior Criminal Justice, EU and International Press Officer)

Tel: 020 7035 8643 Email: [press.office@justice.gsi.gov.uk](mailto:press.office@justice.gsi.gov.uk)

General enquiries about the statistical work of the Ministry of Justice can be e-mailed to:

[statistics.enquiries@justice.gsi.gov.uk](mailto:statistics.enquiries@justice.gsi.gov.uk)

General information about the official statistics system of the UK is available from

[www.statistics.gov.uk](http://www.statistics.gov.uk)

© Crown copyright Produced by the Ministry of Justice

Alternative formats are available on request from [esd@justice.gsi.gov.uk](mailto:esd@justice.gsi.gov.uk)

**Table 1 Males sentenced for indictable offences by type of court, age group, type of sentence and quarter, 2005-2007<sup>(1)</sup>**

England and Wales	Males sentenced										Percentage change				
	Q4 2005	Q1 2006	Q2 2006	Q3 2006	Q4 2006	Q1 2007	Q2 2007	Q3 2007	Q4 2007	Q4 2006	Q1 2007	Q2 2007	Q3 2007	Q4 2007	
<b>Magistrates' courts</b>															
<b>Juveniles (under 18)</b>															
Number sentenced	9,665	9,780	9,427	9,678	9,615	10,405	10,598	10,344	9,878	-0.5	6.4	12.4	6.9	2.7	
Number given immediate custody	725	830	832	882	775	751	816	819	727	6.9	-9.5	-1.9	-7.1	-6.2	
Number given fines	603	583	537	445	527	559	519	524	550	-12.6	-4.1	-3.4	17.8	4.4	
Number given community sentences	7,206	7,146	6,906	7,246	7,196	7,797	8,008	7,734	7,450	-0.1	9.1	16.0	6.7	3.5	
Number given other sentences	1,131	1,221	1,152	1,105	1,117	1,298	1,255	1,267	1,151	-1.2	6.3	8.9	14.7	3.0	
Average custodial sentence length (months) <sup>(2)</sup>	7.0	7.3	7.3	7.2	7.0	7.0	7.0	7.2	7.6	0.0	-4.1	-4.1	0.0	8.6	
<b>Young Adults (18-20)</b>															
Number sentenced	6,668	7,134	6,722	6,996	6,445	7,215	7,129	7,045	6,837	-3.3	1.1	6.1	0.7	6.1	
Number given immediate custody	821	954	802	939	796	842	897	892	823	-3.0	-11.7	11.8	-5.0	3.4	
Number given fines	1,954	2,025	1,848	1,813	1,660	1,789	1,725	1,620	1,587	-15.0	-11.7	-6.7	-10.6	-4.4	
Number given community sentences	2,290	2,307	2,293	2,338	2,211	2,417	2,429	2,465	2,409	-3.4	4.8	5.9	5.4	9.0	
Number given suspended sentences	147	191	304	421	346	393	358	334	383	*	*	17.8	-20.7	10.7	
Number given other sentences	1,456	1,657	1,475	1,485	1,432	1,774	1,720	1,734	1,635	-1.6	7.1	16.6	16.8	14.2	
Average custodial sentence length (months) <sup>(2)</sup>	2.6	2.8	2.7	2.7	2.7	2.7	2.8	2.8	2.7	3.8	-3.6	3.7	3.7	0.0	
<b>Adults (21 and over)</b>															
Number sentenced	31,999	34,058	31,610	31,399	29,149	32,770	31,453	32,480	31,950	-8.9	-3.8	-0.5	3.4	9.6	
Number given immediate custody	5,569	5,857	5,444	5,281	4,810	5,194	4,967	5,420	5,499	-13.6	-11.3	-8.8	2.6	14.3	
Number given fines	9,062	9,625	8,450	8,352	7,761	8,386	8,022	8,147	7,744	-14.4	-12.9	-5.1	-2.5	-0.2	
Number given community sentences	9,084	9,217	8,575	8,303	7,796	9,027	8,463	8,682	8,677	-14.2	-2.1	-1.3	4.6	11.3	
Number given suspended sentences	1,150	1,619	1,868	2,233	2,100	2,243	2,215	2,299	2,315	82.6	38.5	18.6	3.0	10.2	
Number given other sentences	7,134	7,740	7,273	7,230	6,682	7,920	7,786	7,932	7,715	-6.3	2.3	7.1	9.7	15.5	
Average custodial sentence length (months) <sup>(2)</sup>	2.4	2.4	2.4	2.4	2.3	2.3	2.3	2.3	2.3	-4.2	-4.2	-4.2	-4.2	0.0	
<b>The Crown Court</b>															
<b>Juveniles (under 18)</b>															
Number sentenced	534	629	544	577	556	601	600	573	596	4.1	-4.5	10.3	-0.7	7.2	
Number given immediate custody	336	407	350	384	372	368	367	372	367	10.7	-9.6	4.9	-3.1	-1.3	
Number given fines	2	2	1	1	-	3	2	3	4	*	*	*	*	*	
Number given community sentences	154	196	169	173	158	203	196	172	180	2.6	3.6	16.0	-0.6	13.9	
Number given other sentences	42	24	24	19	26	27	35	26	45	*	*	*	*	*	
Average custodial sentence length (months) <sup>(2)</sup>	22.4	22.7	23.2	21.4	22.1	20.9	20.4	21.6	20.1	-1.3	-7.9	-12.1	0.9	-9.0	
<b>Young Adults (18-20)</b>															
Number sentenced	2,623	2,952	2,612	2,787	2,791	3,114	2,882	2,895	3,025	6.4	5.5	10.3	3.9	8.4	
Number given immediate custody	1,559	1,606	1,465	1,632	1,592	1,769	1,699	1,739	1,772	2.1	10.1	16.0	6.6	11.3	
Number given fines	43	65	45	54	39	55	47	49	48	-9.3	-15.4	4.4	-9.3	23.1	
Number given community sentences	845	935	687	657	667	670	624	560	665	-21.1	-28.3	-9.2	-14.8	-0.3	
Number given suspended sentences	61	226	322	352	397	490	374	444	418	*	*	*	26.1	5.3	
Number given other sentences	115	120	93	92	96	130	138	103	122	-16.5	8.3	48.4	12.0	27.1	
Average custodial sentence length (months) <sup>(2)</sup>	21.3	22.1	21.1	21.3	23.3	21.0	20.0	20.5	20.6	9.4	-5.0	-5.2	-3.8	-11.6	
<b>Adults (21 and over)</b>															
Number sentenced	12,505	13,599	12,451	12,643	12,561	13,745	13,076	13,486	13,724	0.4	1.1	5.0	6.7	9.3	
Number given immediate custody	7,671	8,184	7,572	7,594	7,497	7,938	7,579	7,887	8,026	-2.3	-3.0	0.1	3.9	7.1	
Number given fines	289	305	259	269	273	376	302	297	277	-5.5	23.3	16.6	10.4	1.5	
Number given community sentences	3,212	3,119	2,451	2,275	2,110	2,263	2,040	2,052	2,020	-34.3	-27.4	-16.8	-9.8	-4.3	
Number given suspended sentences	700	1,303	1,603	1,898	2,130	2,512	2,513	2,656	2,759	204.3	92.8	56.8	39.9	29.5	
Number given other sentences	633	688	566	607	551	656	642	594	642	-13.0	-4.7	13.4	-2.1	16.5	
Average custodial sentence length (months) <sup>(2)</sup>	27.1	26.4	26.7	26.5	26.7	25.9	25.9	25.8	26.7	-1.5	-1.9	-3.0	-2.6	0.0	

(1) 2007 data is provisional.

(2) Excludes life and indeterminate sentences. Offenders receiving an indeterminate sentence for public protection for a serious offence committed from 4 April 2005 would previously have included in the average custodial sentence length and are no longer. This may result in a decrease in average custodial sentence lengths.

\* Number too small to give a meaningful percentage change

**Table 2 Females sentenced for indictable offences by type of court, age group, type of sentence and quarter, 2005-2007<sup>(1)</sup>**

England and Wales	Females sentenced										Percentage change				
	Q4 2005	Q1 2006	Q2 2006	Q3 2006	Q4 2006	Q1 2007	Q2 2007	Q3 2007	Q4 2007	Q4 2006	Q1 2007	Q2 2007	Q3 2007	Q4 2007	
<b>Magistrates' courts</b>															
<b>Juveniles (under 18)</b>															
Number sentenced	1,697	1,640	1,648	1,669	1,638	1,786	1,854	1,806	1,639	-3.5	8.9	12.5	8.2	0.1	
Number given immediate custody	77	58	61	71	68	56	62	64	63	-11.7	-3.4	1.6	-9.9	-7.4	
Number given fines	62	50	46	38	40	45	56	60	37	-35.5	-10.0	21.7	57.9	-7.5	
Number given community sentences	1,357	1,342	1,357	1,350	1,324	1,452	1,452	1,494	1,338	-2.4	8.2	7.0	10.7	1.1	
Number given other sentences	201	190	184	210	206	233	284	188	201	2.5	22.6	54.3	-10.5	-2.4	
Average custodial sentence length (months) <sup>(2)</sup>	7.0	5.8	7	6.3	6.9	5.9	6.2	6.4	6.0	-1.4	1.7	-11.4	1.6	-13.0	
<b>Young Adults (18-20)</b>															
Number sentenced	1,003	1,050	961	981	832	945	903	936	935	-17.0	-10.0	-6.0	-4.6	12.4	
Number given immediate custody	72	108	87	71	72	74	72	80	74	0.0	-31.5	-17.2	12.7	2.8	
Number given fines	220	198	179	181	145	148	161	136	155	-34.1	-25.3	-10.1	-24.9	6.9	
Number given community sentences	354	362	335	346	276	333	314	345	330	-22.0	-8.0	-6.3	-0.3	19.6	
Number given suspended sentences	22	31	37	43	54	50	33	44	55	*	*	*	*	*	
Number given other sentences	335	351	323	340	285	340	323	331	321	-14.9	-3.1	0.0	-2.6	12.6	
Average custodial sentence length (months) <sup>(2)</sup>	2.5	2.4	2.4	2.8	2.4	2.2	2.4	2.6	2.3	-4.0	-8.3	0.0	-7.1	-4.2	
<b>Adults (21 and over)</b>															
Number sentenced	6,685	6,868	6,435	6,288	5,773	6,633	6,524	6,496	6,808	-13.6	-3.4	1.4	3.3	17.9	
Number given immediate custody	756	797	788	757	679	712	736	760	809	-10.2	-10.7	-6.6	0.4	19.1	
Number given fines	1,370	1,301	1,165	1,103	1,056	1,164	1,167	1,131	1,139	-22.9	-10.5	0.2	2.5	7.9	
Number given community sentences	2,196	2,129	2,037	1,955	1,757	2,031	2,018	1,997	2,098	-20.0	-4.6	-0.9	2.1	19.4	
Number given suspended sentences	197	340	376	455	410	456	440	406	475	*	34.1	17.0	-10.8	15.9	
Number given other sentences	2,166	2,301	2,069	2,018	1,871	2,270	2,163	2,202	2,287	-13.6	-1.3	4.5	9.1	22.2	
Average custodial sentence length (months) <sup>(2)</sup>	2.1	2.1	2.1	2.1	2.1	2.0	2.1	2.0	2.1	0.0	-4.8	0.0	-4.8	0.0	
<b>The Crown Court</b>															
<b>Juveniles (under 18)</b>															
Number sentenced	73	71	44	55	49	66	62	79	57	-32.9	-7.0	40.9	43.6	16.3	
Number given immediate custody	34	26	19	26	19	33	25	44	23	*	*	*	*	*	
Number given fines	-	-	-	3	1	0	0	-	-	*	*	*	*	*	
Number given community sentences	36	39	23	19	24	28	28	31	27	*	*	*	*	*	
Number given other sentences	3	6	2	7	5	5	9	4	7	*	*	*	*	*	
Average custodial sentence length (months) <sup>(2)</sup>	17.6	18.9	16.4	15.7	22.7	19.0	15.1	16.8	12.8	29.0	0.5	-7.9	7.0	-43.6	
<b>Young Adults (18-20)</b>															
Number sentenced	240	276	205	268	238	213	208	244	238	-0.8	-22.8	1.5	-9.0	0.0	
Number given immediate custody	84	121	69	86	74	69	66	97	92	-11.9	-43.0	-4.3	12.8	24.3	
Number given fines	4	6	2	2	-	1	4	1	1	*	*	*	*	*	
Number given community sentences	117	108	82	93	94	71	76	67	79	-19.7	-34.3	-7.3	-28.0	-16.0	
Number given suspended sentences	13	28	36	65	52	52	48	58	50	*	*	*	*	*	
Number given other sentences	22	13	16	22	18	20	14	21	16	*	*	*	*	*	
Average custodial sentence length (months) <sup>(2)</sup>	19.2	19.5	20.3	19.4	20.8	22.3	22.1	17.7	21.6	8.3	14.4	8.9	-8.8	3.8	
<b>Adults (21 and over)</b>															
Number sentenced	1,636	1,806	1,618	1,647	1,605	1,696	1,765	1,878	1,854	-1.9	-6.1	9.1	14.0	15.5	
Number given immediate custody	627	701	650	633	567	608	655	669	697	-9.6	-13.3	0.8	5.7	22.9	
Number given fines	37	27	18	24	22	43	20	31	28	*	*	*	*	*	
Number given community sentences	620	620	493	447	444	429	442	418	405	-28.4	-30.8	-10.3	-6.5	-8.8	
Number given suspended sentences	203	312	340	415	443	472	510	586	588	118.2	51.3	50.0	41.2	32.7	
Number given other sentences	149	146	117	128	129	144	138	174	136	-13.4	-1.4	17.9	35.9	5.4	
Average custodial sentence length (months) <sup>(2)</sup>	21.3	21.5	21.9	23.2	20.2	21.9	20.6	21.5	18.6	-5.2	1.9	-5.9	-7.3	-7.9	

(1) 2007 data is provisional.

(2) Excludes life and indeterminate sentences. Offenders receiving an indeterminate sentence for public protection for a serious offence committed from 4 April 2005 would previously have included in the average custodial sentence length and are no longer. This may result in a decrease in average custodial sentence lengths.

\* Number too small to give a meaningful percentage change

**Table 3 Persons sentenced for indictable offences by type of court, type of sentence (detailed) and quarter, 2005-2007<sup>(1)</sup>**

England and Wales	Persons sentenced									Percentage change				
	Q4 2005	Q1 2006	Q2 2006	Q3 2006	Q4 2006	Q1 2007	Q2 2007	Q3 2007	Q4 2007	Q4 2006	Q1 2007	Q2 2007	Q3 2007	Q4 2007
<b>Magistrates' courts</b>														
<b>Immediate custodial sentences</b>														
Detention and training order	802	888	893	953	843	807	878	883	790	5.1	-9.1	-1.7	-7.3	-6.3
Young offender institution	893	1,062	889	1,010	868	916	969	972	897	-2.8	-13.7	9.0	-3.8	3.3
Unsuspending imprisonment	6,325	6,654	6,232	6,038	5,489	5,906	5,703	6,180	6,308	-13.2	-11.2	-8.5	2.4	14.9
<b>Total immediate custody</b>	<b>8,020</b>	<b>8,604</b>	<b>8,014</b>	<b>8,001</b>	<b>7,200</b>	<b>7,629</b>	<b>7,550</b>	<b>8,035</b>	<b>7,995</b>	<b>-10.2</b>	<b>-11.3</b>	<b>-5.8</b>	<b>0.4</b>	<b>11.0</b>
<b>Community sentences</b>														
Community rehabilitation order	1,095	654	443	366	312	372	339	315	276	-71.5	-43.1	-23.5	-13.9	-11.5
Supervision order	1,585	1,631	1,620	1,726	1,725	1,888	1,891	1,796	1,638	8.8	15.8	16.7	4.1	-5.0
Community punishment order	1,373	890	671	543	408	360	303	317	345	-70.3	-59.6	-54.8	-41.6	-15.4
Attendance centre order	372	421	429	433	418	414	477	436	473	12.4	-1.7	11.2	0.7	13.2
Community punishment and rehabilitation order	465	346	314	265	231	274	225	262	216	-50.3	-20.8	-28.3	-1.1	-6.5
Curfew order	1,204	967	926	934	850	925	968	925	1,003	-29.4	-4.3	4.5	-1.0	18.0
Reparation order	381	442	438	419	414	450	510	446	467	8.7	1.8	16.4	6.4	12.8
Action plan order	671	649	651	590	569	619	690	622	537	-15.2	-4.6	6.0	5.4	-5.6
Drug treatment and testing order	137	60	28	22	14	7	5	4	1	*	*	*	*	*
Referral order <sup>(2)</sup>	4,195	4,156	3,948	4,083	4,137	4,505	4,563	4,462	4,241	-1.4	8.4	15.6	9.3	2.5
Community order <sup>(3)</sup>	11,009	12,287	12,035	12,157	11,482	13,243	12,755	13,098	13,105	4.3	7.8	6.0	7.7	14.1
<b>Total community sentences</b>	<b>22,487</b>	<b>22,503</b>	<b>21,503</b>	<b>21,538</b>	<b>20,560</b>	<b>23,057</b>	<b>22,726</b>	<b>22,636</b>	<b>22,302</b>	<b>-8.6</b>	<b>2.5</b>	<b>5.7</b>	<b>5.1</b>	<b>8.5</b>
<b>Other sentences</b>														
Absolute or conditional discharge	9,849	10,551	9,757	9,361	8,680	10,758	10,357	10,560	10,265	-11.9	2.0	6.1	12.8	18.3
Fine	13,271	13,782	12,225	11,932	11,189	12,091	11,650	11,618	11,212	-15.7	-12.3	-4.7	-2.6	0.2
Suspended sentence <sup>(4)</sup>	1,516	2,181	2,585	3,152	2,910	3,142	3,046	3,083	3,229	92.0	44.1	17.8	-2.2	11.0
Otherwise dealt with	2,574	2,909	2,719	3,027	2,913	3,077	3,132	3,128	3,044	13.2	5.8	15.2	3.3	4.5
<b>Total other sentences</b>	<b>27,210</b>	<b>29,423</b>	<b>27,286</b>	<b>27,472</b>	<b>25,692</b>	<b>29,068</b>	<b>28,185</b>	<b>28,389</b>	<b>27,750</b>	<b>-5.6</b>	<b>-1.2</b>	<b>3.3</b>	<b>3.3</b>	<b>8.0</b>
<b>The Crown Court</b>														
<b>Immediate custodial sentences</b>														
S90-92 PCC(S) Act 2000	102	145	109	103	109	105	81	116	82	6.9	-27.6	-25.7	12.6	-24.8
Detention and training order	220	255	231	278	244	259	271	263	274	10.9	1.6	17.3	-5.4	12.3
Young offender institution	1,573	1,682	1,500	1,668	1,605	1,753	1,692	1,773	1,784	2.0	4.2	12.8	6.3	11.2
Unsuspending imprisonment	8,416	8,963	8,285	8,306	8,163	8,668	8,347	8,656	8,837	-3.0	-3.3	0.7	4.2	8.3
<b>Total immediate custody</b>	<b>10,311</b>	<b>11,045</b>	<b>10,125</b>	<b>10,355</b>	<b>10,121</b>	<b>10,785</b>	<b>10,391</b>	<b>10,808</b>	<b>10,977</b>	<b>-1.8</b>	<b>-2.4</b>	<b>2.6</b>	<b>4.4</b>	<b>8.5</b>
<b>Community sentences</b>														
Community rehabilitation order	597	513	162	73	67	80	61	45	42	-88.8	-84.4	-62.3	-38.4	-37.3
Supervision order	80	93	79	81	82	85	106	79	87	2.5	-8.6	34.2	-2.5	6.1
Community punishment order	947	830	270	123	97	114	51	38	45	-89.8	-86.3	-81.1	-69.1	-53.6
Attendance centre order	1	1	4	1	1	1	1	-	2	*	*	*	*	*
Community punishment and rehabilitation order	322	270	122	58	56	57	45	42	34	-82.6	-78.9	-63.1	-27.6	-39.3
Curfew order	96	110	52	58	46	68	44	54	64	-52.1	-38.2	-15.4	-6.9	39.1
Reparation order	3	2	1	1	3	2	0	1	0	*	*	*	*	*
Action plan order	2	3	5	3	7	7	5	3	5	*	*	*	*	*
Drug treatment and testing order	240	76	43	21	7	4	6	3	0	*	*	*	*	*
Community order <sup>(3)</sup>	2,696	3,119	3,167	3,245	3,131	3,246	3,087	3,035	3,097	16.1	4.1	-2.5	-6.5	-1.1
<b>Total community sentences</b>	<b>4,984</b>	<b>5,017</b>	<b>3,905</b>	<b>3,664</b>	<b>3,497</b>	<b>3,664</b>	<b>3,406</b>	<b>3,300</b>	<b>3,376</b>	<b>-29.8</b>	<b>-27.0</b>	<b>-12.8</b>	<b>-9.9</b>	<b>-3.5</b>
<b>Other sentences</b>														
Absolute or conditional discharge	494	510	431	447	402	520	496	483	478	-18.6	2.0	15.1	8.1	18.9
Fine	375	405	325	353	335	478	375	381	358	-10.7	18.0	15.4	7.9	6.9
Suspended sentence <sup>(4)</sup>	978	1,869	2,301	2,730	3,022	3,526	3,445	3,744	3,815	209.0	88.7	49.7	37.1	26.2
Otherwise dealt with	469	487	387	428	423	462	480	439	490	-9.8	-5.1	24.0	2.6	15.8
<b>Total other sentences</b>	<b>2,316</b>	<b>3,271</b>	<b>3,444</b>	<b>3,958</b>	<b>4,182</b>	<b>4,986</b>	<b>4,796</b>	<b>5,047</b>	<b>5,141</b>	<b>80.6</b>	<b>52.4</b>	<b>39.3</b>	<b>27.5</b>	<b>22.9</b>

(1) 2007 data is provisional.

(2) Referral orders now include numbers of extension of referral orders, and may therefore not be the same as previously published figures.

(3) Community orders were introduced by the Criminal Justice Act 2003 for offences committed from 4 April 2005.

(4) Fully suspended sentence for offences committed prior to 4 April 2005, suspended sentence order for offences committed from 4 April 2005.

\* Number too small to give a meaningful percentage change

**Table 4 Persons sentenced for indictable offences at all courts by offence group and quarter, 2005-2007<sup>(1)</sup>**

England and Wales	Persons sentenced									Percentage change				
	Q4 2005	Q1 2006	Q2 2006	Q3 2006	Q4 2006	Q1 2007	Q2 2007	Q3 2007	Q4 2007	Q4 2006	Q1 2007	Q2 2007	Q3 2007	Q4 2007
Violence against the person	10,217	10,958	10,000	10,563	10,248	10,842	10,232	10,559	10,519	0.3	-1.1	2.3	0.0	2.6
Sexual offences	1,225	1,241	1,171	1,221	1,289	1,328	1,239	1,201	1,297	5.2	7.0	5.8	-1.6	0.6
Burglary	5,515	5,769	5,323	5,868	5,669	5,963	5,780	6,129	5,708	2.8	3.4	8.6	4.4	0.7
Robbery	1,810	2,042	1,950	2,124	2,052	2,236	2,200	2,193	2,249	13.4	9.5	12.8	3.2	9.6
Theft and handling stolen goods	24,970	26,158	24,672	24,188	23,140	26,781	26,190	26,270	26,475	-7.3	2.4	6.2	8.6	14.4
Fraud and forgery	4,668	5,045	4,671	4,432	4,119	5,016	4,937	5,191	4,949	-11.8	-0.6	5.7	17.1	20.2
Criminal damage	2,939	3,188	3,086	3,194	3,000	3,337	3,105	3,125	2,775	2.1	4.7	0.6	-2.2	-7.5
Drug offences	9,680	10,712	10,019	9,652	9,030	10,766	10,920	11,148	11,751	-6.7	0.5	9.0	15.5	30.1
Other (excluding motoring offences)	12,784	13,045	11,931	12,262	11,347	11,426	11,051	11,163	10,537	-11.2	-12.4	-7.4	-9.0	-7.1
Indictable motoring offences	1,520	1,705	1,454	1,484	1,358	1,494	1,400	1,283	1,281	-10.7	-12.4	-3.7	-13.5	-5.7
<b>Total indictable offences</b>	<b>75,328</b>	<b>79,863</b>	<b>74,277</b>	<b>74,988</b>	<b>71,252</b>	<b>79,189</b>	<b>77,054</b>	<b>78,262</b>	<b>77,541</b>	<b>-5.4</b>	<b>-0.8</b>	<b>3.7</b>	<b>4.4</b>	<b>8.8</b>

(1) 2007 data is provisional.

**Table 5 Persons sentenced for indictable offences at all courts by quarter, type of sentence and offence group, 2005-2007<sup>(1)</sup>**

England and Wales		Persons sentenced and percentages										
Quarter and type of sentence		Violence against the person	Sexual offences	Burglary	Robbery	Theft and handling stolen goods	Fraud and forgery	Criminal damage	Drug offences	Other (excluding motoring offences)	Motoring offences	Total
2005 Q4	Total number sentenced	10,217	1,225	5,515	1,810	24,970	4,668	2,939	9,680	12,784	1,520	75,328
	% given fines	6%	3%	1%	*	15%	13%	12%	34%	35%	29%	18%
	% given community sentences	46%	33%	49%	38%	40%	38%	50%	25%	23%	31%	36%
	% given immediate custody	30%	53%	40%	59%	19%	26%	10%	19%	21%	30%	24%
	% given suspended sentences	6%	4%	4%	1%	3%	5%	2%	2%	2%	5%	3%
	% given other sentences	12%	6%	5%	2%	23%	18%	26%	19%	19%	5%	18%
	Average custodial sentence length (months) <sup>(2)</sup>	17.2	42.3	17.5	33.9	4.3	10.0	12.7	36.7	8.5	8.0	15.4
2006 Q1	Total number sentenced	10,958	1,241	5,769	2,042	26,158	5,045	3,188	10,712	13,045	1,705	79,863
	% given fines	6%	3%	2%	*	14%	12%	12%	35%	33%	29%	18%
	% given community sentences	43%	29%	45%	34%	37%	37%	46%	24%	24%	30%	34%
	% given immediate custody	30%	56%	42%	62%	20%	25%	11%	19%	20%	27%	25%
	% given suspended sentences	9%	5%	6%	2%	4%	7%	2%	3%	4%	9%	5%
	% given other sentences	12%	7%	5%	2%	24%	20%	28%	19%	19%	4%	18%
	Average custodial sentence length (months) <sup>(2)</sup>	17.7	40.0	16.8	33.7	4.3	10.3	12.1	34.1	8.0	8.6	15.3
2006 Q2	Total number sentenced	10,000	1,171	5,323	1,950	24,672	4,671	3,086	10,019	11,931	1,454	74,277
	% given fines	6%	4%	2%	*	14%	13%	11%	33%	32%	27%	17%
	% given community sentences	41%	28%	44%	36%	37%	37%	48%	24%	23%	28%	34%
	% given immediate custody	30%	57%	40%	59%	20%	23%	11%	19%	20%	30%	24%
	% given suspended sentences	13%	6%	8%	3%	5%	8%	4%	5%	5%	12%	7%
	% given other sentences	11%	5%	6%	1%	24%	19%	26%	19%	19%	4%	18%
	Average custodial sentence length (months) <sup>(2)</sup>	16.7	40.2	17.1	32.4	4.2	10.7	13.8	34.1	9.2	9.0	15.3
2006 Q3	Total number sentenced	10,563	1,221	5,868	2,124	24,188	4,432	3,194	9,652	12,262	1,484	74,988
	% given fines	5%	4%	2%	*	13%	12%	10%	33%	32%	23%	16%
	% given community sentences	40%	25%	44%	38%	37%	35%	49%	23%	22%	27%	34%
	% given immediate custody	29%	59%	41%	57%	20%	23%	11%	19%	20%	31%	24%
	% given suspended sentences	15%	5%	8%	3%	6%	11%	4%	5%	6%	15%	8%
	% given other sentences	10%	7%	6%	2%	24%	19%	26%	20%	19%	4%	18%
	Average custodial sentence length (months) <sup>(2)</sup>	17.0	41.5	16.8	31.8	4.4	11.0	13.3	32.6	9.1	9.1	15.2
2006 Q4	Total number sentenced	10,248	1,289	5,669	2,052	23,140	4,119	3,000	9,030	11,347	1,358	71,252
	% given fines	5%	3%	2%	*	13%	13%	11%	33%	33%	25%	16%
	% given community sentences	39%	26%	42%	36%	38%	32%	50%	22%	22%	28%	34%
	% given immediate custody	29%	55%	40%	57%	19%	27%	10%	19%	19%	27%	24%
	% given suspended sentences	16%	9%	9%	4%	6%	11%	4%	6%	7%	16%	8%
	% given other sentences	10%	7%	6%	2%	23%	18%	25%	20%	19%	4%	17%
	Average custodial sentence length (months) <sup>(2)</sup>	16.8	42.3	17.6	31.9	4.3	11.4	14.7	34.3	9.9	9.7	15.8
2007 Q1	Total number sentenced	10,842	1,328	5,963	2,236	26,781	5,016	3,337	10,766	11,426	1,494	79,189
	% given fines	5%	3%	2%	*	13%	13%	9%	32%	31%	25%	15%
	% given community sentences	38%	26%	43%	40%	37%	32%	45%	23%	24%	26%	34%
	% given immediate custody	30%	56%	39%	54%	18%	24%	10%	18%	18%	28%	23%
	% given suspended sentences	17%	9%	10%	4%	6%	10%	4%	6%	7%	16%	8%
	% given other sentences	11%	5%	6%	2%	25%	21%	31%	21%	18%	6%	19%
	Average custodial sentence length (months) <sup>(2)</sup>	17.5	41.8	17.5	29.8	4.2	10.1	11.6	31.6	9.7	8.7	15.2
2007 Q2	Total number sentenced	10,232	1,239	5,780	2,200	26,190	4,937	3,105	10,920	11,051	1,400	77,054
	% given fines	4%	2%	2%	*	13%	12%	10%	31%	31%	23%	16%
	% given community sentences	39%	27%	44%	39%	38%	32%	46%	23%	23%	27%	34%
	% given immediate custody	29%	55%	39%	54%	18%	25%	11%	18%	19%	28%	23%
	% given suspended sentences	17%	9%	9%	5%	6%	12%	4%	6%	8%	15%	8%
	% given other sentences	11%	6%	7%	2%	25%	19%	30%	22%	19%	7%	19%
	Average custodial sentence length (months) <sup>(2)</sup>	17.3	42.7	15.8	30.0	4.0	10.3	12.6	31.8	9.5	8.8	15.0
2007 Q3	Total number sentenced	10,559	1,201	6,129	2,193	26,270	5,191	3,125	11,148	11,163	1,283	78,262
	% given fines	5%	2%	2%	*	13%	11%	10%	32%	30%	24%	15%
	% given community sentences	37%	28%	42%	40%	38%	30%	45%	23%	22%	25%	33%
	% given immediate custody	30%	56%	40%	53%	19%	27%	11%	19%	20%	30%	24%
	% given suspended sentences	17%	8%	10%	5%	6%	12%	5%	6%	8%	15%	9%
	% given other sentences	11%	6%	6%	2%	25%	20%	30%	21%	19%	6%	19%
	Average custodial sentence length (months) <sup>(2)</sup>	16.1	43.6	16.5	30.7	4.2	9.9	12.0	32.4	9.4	8.7	14.9
2007 Q4	Total number sentenced	10,519	1,297	5,708	2,249	26,475	4,949	2,775	11,751	10,537	1,281	77,541
	% given fines	5%	3%	2%	*	12%	12%	10%	31%	27%	21%	15%
	% given community sentences	38%	27%	41%	39%	37%	30%	44%	24%	24%	25%	33%
	% given immediate custody	31%	54%	39%	55%	19%	26%	11%	18%	22%	30%	24%
	% given suspended sentences	17%	8%	11%	5%	7%	13%	5%	6%	9%	18%	9%
	% given other sentences	10%	7%	6%	1%	24%	18%	30%	21%	19%	6%	18%
	Average custodial sentence length (months) <sup>(2)</sup>	16.6	43.7	16.7	34.7	3.9	9.7	14.3	31.8	9.7	9.1	14.0

(1) 2007 data is provisional.

(2) Excludes life and indeterminate sentences. Offenders receiving an indeterminate sentence for public protection for a serious offence committed from 4 April 2005 would previously have been included in the average custodial sentence length and are no longer. This may result in a decrease in average custodial sentence lengths.