



Ministry of
JUSTICE

**Local Adult Reoffending
1 July 2008 –
30 June 2009
England and Wales**

Ministry of Justice
Statistics bulletin

Published 19 November 2009

Local Adult Reoffending

Introduction

Local adult reoffending data has been developed to provide more timely performance data on trends in reoffending, and to provide insight into reoffending at the regional and local levels.

The key uses of this data will be to monitor the progress of Local Area Agreements in reducing reoffending under National Indicator 18 within the National Indicator Set¹, and to provide key outcome data to assist in assessing Probation Area performance.

This bulletin contains reoffending data at the following geographic levels:

- England and Wales as a whole
- Government Office Regions and Wales
- Probation Areas
- Local Authorities².

It covers reoffending in the period 1 July 2008 to 30 June 2009.

These statistics are published on a quarterly basis, and are available via the Ministry of Justice website:

www.justice.gov.uk/publications/local-adult-reoffending.htm

The reoffending data in this bulletin are based on a different methodology and timescale to the annual National Statistics on adult reoffending:

www.justice.gov.uk/publications/reoffendingofadults.htm

Appendix B gives details and reasons for the main differences in the measures.

¹ For more information on the National Indicator Set please see:
www.communities.gov.uk/localgovernment/performanceframeworkpartnerships/nationalindicators

² "Local authorities" in this report, are unitary authorities in single-tier areas, or upper tier authorities (e.g. county councils) in two-tier areas.

Local Adult Reoffending

Key points

All statements on increases or decreases in reoffending rates in this section refer to rates that have been adjusted to control for changes in the characteristics of offenders on the probation caseload³.

- The three month reoffending rate of all offenders on the probation caseload in England and Wales who were at risk of reoffending during the period 1 July 2008 to 30 June 2009 was 9.93 per cent. This was a decrease of 0.52 per cent compared to the 2007/2008 baseline (1 April 2007 to 31 March 2008) which was not statistically significant.
- Two Government Office Regions had a statistically significant increase in reoffending compared to the baseline (East of England and South West) and two Government Office Regions had a statistically significant reduction in reoffending (East Midlands and Yorkshire & Humberside)⁴.
- Seven Probation Areas had a statistically significant increase in reoffending, whilst eight Probation Areas showed a statistically significant reduction in reoffending.
- Thirteen local authorities had a statistically significant increase in reoffending, whilst sixteen⁵ local authorities showed a statistically significant reduction in reoffending.
- Reoffending by offenders on licence from custodial sentences showed a statistically significant increase of 6.18 per cent compared to the baseline, although the actual rate of reoffending remained lower than for offenders on court orders under probation supervision.
- Reoffending by offenders serving a court order showed a statistically significant reduction of 1.64 per cent compared to the baseline.
- The unadjusted rate of reoffending in the period 1 July 2008 to 30 June 2009 was 0.10⁶ percentage points higher than reoffending in

³ See Appendix C for more information on the predicted rate, what variables we control for and why it is important to control for changes in offender characteristics.

⁴ Changes in reoffending performance are only reported where the changes are statistically significant (i.e. we are 95 per cent confident that the change is a real one, and not due to random volatility in the datasets).

⁵ This includes the Isles of Scilly, whose reoffending rate is based on a very small cohort size.

⁶ This does not match with the difference that can be calculated from Table 1 in Appendix A because the numbers in Table 1 are rounded to two decimal points.

the baseline period 1 April 2007 to 31 March 2008, but 0.05 percentage points lower than reoffending in the previous quarter (1 April 2008 to 31 March 2009).

Results for all regions, Probation Areas and local authorities are available in Appendix A, and are presented by Government Office Region.

Trends in performance by area

The reoffending of individual areas over time has been tracked to assess whether any areas have seen clear trends in reoffending rates since the 2007/08 baseline. This analysis focuses on areas where reoffending has been significantly higher or lower than predicted over four or more consecutive periods.

Reductions in reoffending

At the Government Office Region level, no area has seen a consistent reduction in reoffending since the 2007/08 baseline period.

At the Probation Area level, Nottinghamshire has experienced four periods in which reoffending has been lower than predicted, with rates in the Nottingham local authority area showing the same pattern. South Yorkshire Probation Area has also shown a consistent reduction in reoffending since the baseline. Within South Yorkshire, Sheffield and Rotherham local authority areas have also experienced reoffending rates which are lower than predicted over the four most recent periods.

Hillingdon and Southampton local authority areas have also had reoffending rates which are consistently lower than predicted.

Increases in reoffending

Two Government Office Regions have seen a significant increase in reoffending across the four most recent periods: the East of England and the South West.

Within the East of England region, Hertfordshire local authority area has also seen rates of reoffending which were significantly higher than predicted over the previous four periods.

Within the South West region Gloucestershire Probation Area and the Gloucestershire local authority have also experienced reoffending rates which are consistently higher than predicted.

No other Probation Areas have experienced reoffending rates which are consistently higher than predicted over the previous four periods.

At the local authority level, Lancashire, Swansea, the Wirral and Wrexham have had reoffending rates which have been significantly higher than predicted in the four most recent periods.

Performance since the 2007/08 baseline

Chart 1 shows the proportion of Probation Areas that have seen increases/decreases/no significant change over each of the five quarters since the baseline. For the most recent quarter about seventeen per cent of areas show an increase, nineteen per cent a decrease and sixty four per cent no significant change. Previous periods saw fewer datasets showing significant changes in reoffending – this is to be expected given the proximity to the baseline period.

Chart 1: Proportion of Probation Areas with increases/decreases/no change in reoffending, July 2007 – June 2009

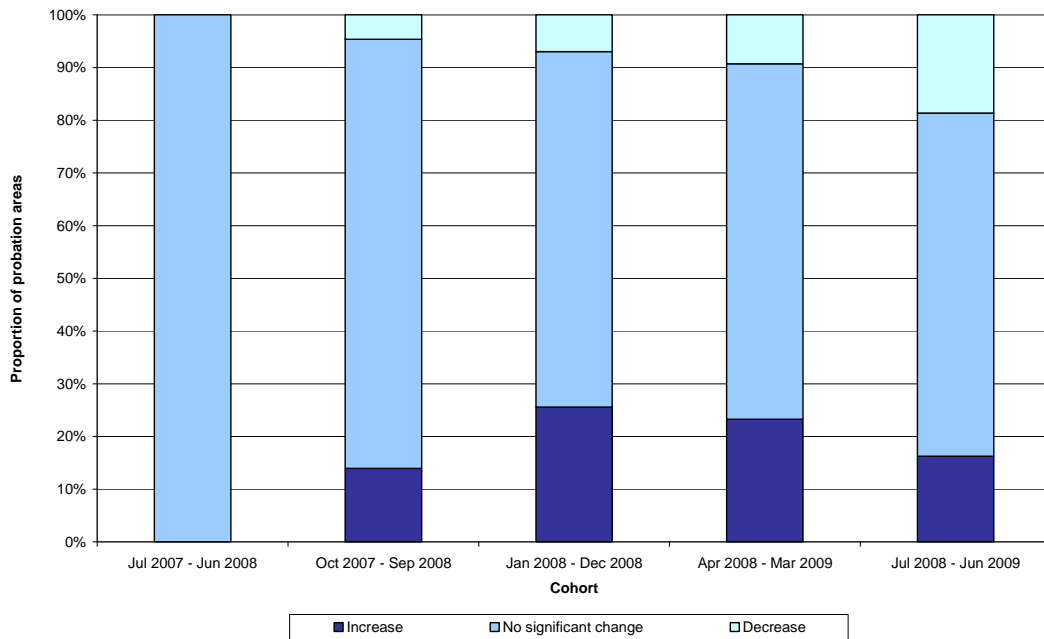
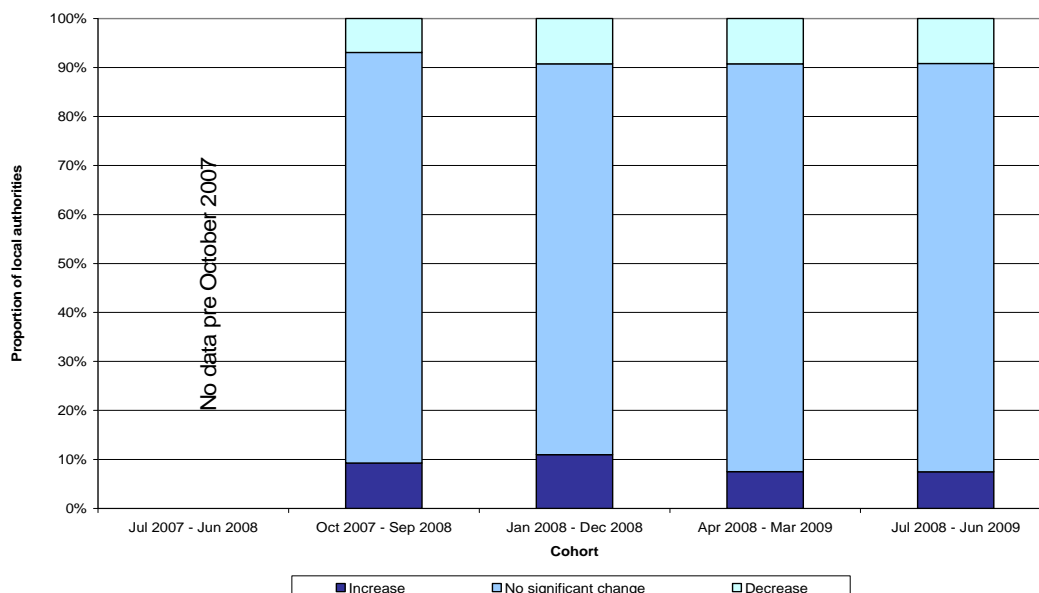


Chart 2 presents the same information for local authorities⁷. For the most recent quarter the proportion showing an increase or decrease was the same as for the previous quarter (about eight per cent showing an increase and nine per cent a decrease).

Chart 2: Proportion of local authorities with increases/decreases/no change in reoffending, July 2007 – June 2009



Comparing reoffending rates between areas

Comparing changes in the actual rates of reoffending between areas does not ensure a like for like comparison as the mix of offenders being dealt with may vary across areas and over time.

In comparing reductions in reoffending between areas, it is important that comparisons are made on the basis of the reduction in reoffending after controlling for changes in the characteristics of offenders on the caseload and taking into account the size of the caseload in each area⁸.

⁷ Data for periods prior to October 2007 cannot be broken down to the local authority level.

⁸ Column titled '% difference from baseline' in data tables in Appendix A.

Future reports

This is the fourth of a series of quarterly reports which will monitor local adult reoffending. The previous report was published on 20 August 2009.

This measure is based on combining four quarters of data to give a rolling four quarter report. Each quarter, the latest quarter of data is added, and the oldest removed.

This report covers reoffending in the period 1 July 2008 to 30 June 2009. These results are compared to a baseline period which covered reoffending in the period 1 April 2007 to 31 March 2008.

The next report will be published in February 2010.

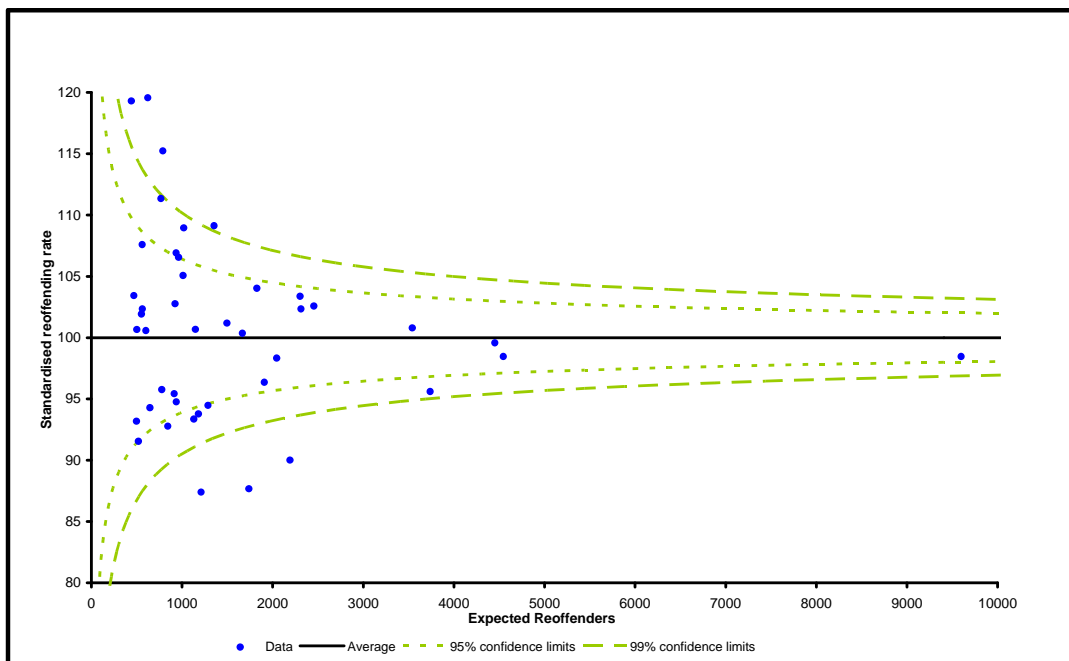
Reoffending rates by Probation Area

Changes in reoffending from the baseline can be illustrated by use of a funnel plot⁹.

The funnel plot below shows, for all Probation Areas, how many areas had shown a statistically significant increase in the rate of reoffending (data points above the “funnels”) and how many had shown a statistically significant reduction in the rate of reoffending (data points below the “funnels”).

Statistical significance in this report has been assessed at the 95 per cent level.

Figure A – Changes in reoffending at the Probation Area level



There are seven areas showing a statistically significant increase in reoffending from the baseline, and eight areas showing a statistically significant reduction.

⁹ See Appendix C for more detail on funnel plots, statistical significance and the predicted rate.

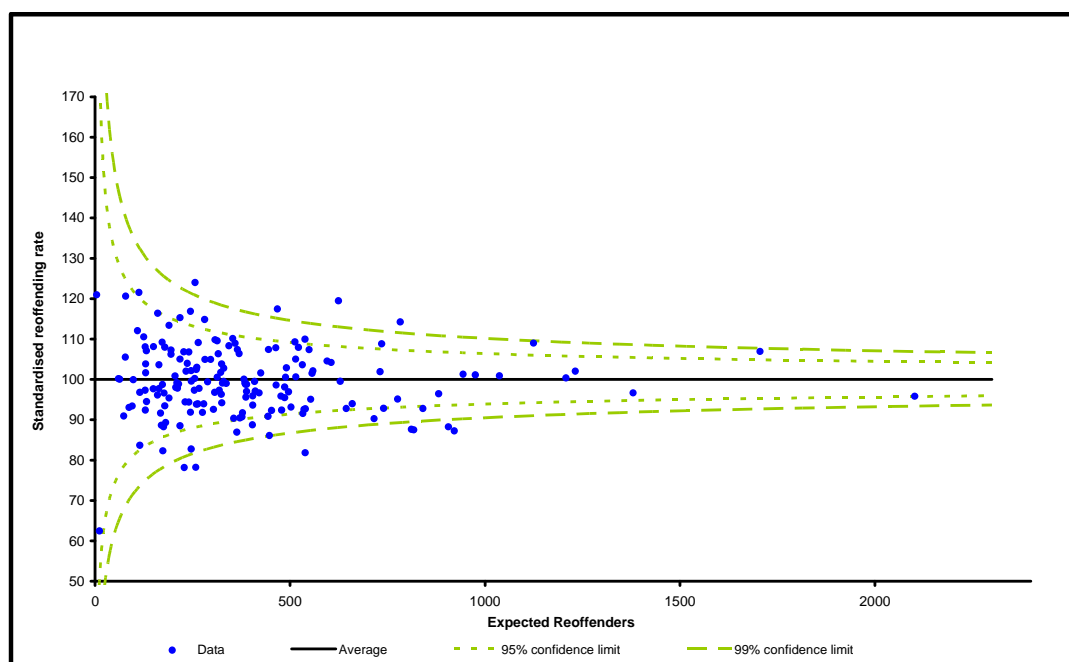
Reoffending by Local Authority Area

Changes in reoffending from the baseline can be illustrated by use of a funnel plot¹⁰.

The funnel plot below shows, for all local authority areas, how many areas had shown a statistically significant increase in the rate of reoffending (data points above the “funnels”) and how many had shown a statistically significant reduction in the rate of reoffending (data points below the “funnels”).

Statistical significance in this report has been assessed at the 95 per cent level.

Figure B – Changes in reoffending at the local authority level



There are thirteen local authorities showing a statistically significant increase in reoffending from the baseline, and sixteen local authorities showing a statistically significant reduction¹¹.

¹⁰ See appendix C for more detail on funnel plots, statistical significance and the predicted rate.

¹¹ The sixteen local authorities showing a significant decrease since the baseline includes the Isles of Scilly, whose reoffending rate is based on a very small cohort size. The chart only has fifteen data points showing a statistically significant decrease. This is because the standardised reoffending rate for the Isles of Scilly was below the scale of the graph.

Explanatory notes

Which offenders are included in the analysis?

The local adult reoffending measure takes a snapshot of every offender, aged 18 or over, who is under probation supervision at the end of a quarter, and combines four such snapshots together.

This means that the measure includes offenders who have been under supervision in the community (either on licence after release from custody or on a court order) for a range of time from one day to a number of years. However, the measure does not include offenders aged 22 or over who have been released from a custodial sentence of less than one year (as they do not receive probation supervision on release).

This also means that some offenders will be included in the sample more than once by combining four snapshots, as offenders can remain under probation supervision for a number of quarters.

What is the baseline that reoffending is being compared to?

The baseline is the data for the financial year 2007/08. It covers reoffending in the four quarters from 1 April 2007 to 31 March 2008. This dataset was used to build the predictive rate model. For more information on the predictive rate model please see Appendix C.

Methodology for measuring reoffending

The local adult measure counts the proportion of offenders who reoffend in a three month period, and compares this to the proportion expected to reoffend given their characteristics. The results of four snapshots are then combined to form a rolling four quarter average. Each quarterly update will include the latest available quarter, and remove the oldest quarter.

What counts as a reoffence?

The local measure allows three months from each snapshot for reoffending to occur (with a further three months for offences to be proved by court conviction or caution).

The measure includes recordable offences, as entered on the Police National Computer (PNC), which are proven by either court convictions or cautions.

The predicted rate

The predicted rate is the proportion of offenders we would expect to reoffend given the known characteristics of the offenders in the snapshot and reoffending rates in the baseline period. More detail on the predicted rate, and the statistical model used to calculate it, is provided in Appendix C.

Explanatory notes (continued)

Assigning offenders to Probation Areas and local authorities

Offenders are assigned to a Probation Area based on where they are recorded on each Area's Caseload Management System. In a small number of cases (less than 1 per cent), offenders cannot be assigned to a Probation Area as they are recorded under more than one Probation Area at the end of a quarter (and are therefore classified as having an unknown Probation Area, and only counted towards the England and Wales level data).

Offenders postcode information is used to assign them to a local authority (98-99 per cent of offenders can be assigned to a local authority). Those offenders that do not have any relevant address information are not matched to a local authority.

A small proportion of offenders (roughly 1 per cent) have a postcode that is in a local authority area outside the Probation Area which supervises them.

These offenders are included under the heading of unknown local authority (shown at the end of table 4).

Differences to the National Statistics on adult reoffending

This measure of local adult reoffending has been developed primarily as a more timely source of performance data on reoffending, and to provide information at the regional and local level.

As such, this measure is substantially different to the National Statistics approach. This reflects changes needed for more rapid reporting and to enable statistically robust analysis at the lower levels of disaggregation.

These differences are covered in detail in Appendix B.

Data sources and quality

The data presented in this bulletin are drawn from Probation Caseload Management systems and the Ministry of Justice extract of the PNC. Although care is taken when processing and analysing the returns, the detail collected is subject to the inaccuracies inherent in any large-scale recording system. While the figures shown have been checked as far as practicable, they should be regarded as approximate and therefore have been rounded to two decimal places.

This bulletin covers all offenders who are on the probation caseload and are at risk of reoffending. Offenders who are recorded as being in custody at the end of each quarter are excluded from the analysis. However, offenders who have entered custody during this three month follow up period cannot be identified in the dataset, and are therefore included in these figures.

Revisions policy

The local adult reoffending results are not subject to routine revisions.

Whilst the Police National Computer is a live system and the Ministry of Justice extract is updated on a weekly basis, the local adult reoffending results are produced using snapshots of this database at the end of each quarter. We do not, therefore, update the results to reflect later updates to the database.

Revisions will only be made in the case of methodological change (on which we would consult in advance) or errors in the dataset (which will be corrected at the first available opportunity). In both cases, any revisions would be clearly explained in the report and accompanying tables showing the old and revised data would be included.

Contact points for further information

Current and previous editions of this publication are available for download at www.justice.gov.uk/publications/local-adult-reoffending.htm

Spreadsheet files of the tables contained in this document are also available for download from this address.

Reports are published on a quarterly basis. The next report which will cover reoffending in the period 1 October 2008 to 30 September 2009 and will be published in February 2010.

Press enquiries should be directed to the Ministry of Justice press office:

Tel: 020 3334 3523

Email: pressofficenewsdesk@justice.gsi.gov.uk

Other enquiries about these statistics should be directed to:

Ministry of Justice
Offender Management and Sentencing – Analytical Services
Reoffending and Criminal Careers
Floor 7/B
102 Petty France
London
SW1H 9AJ

General enquiries about the statistical work of the Ministry of Justice can be emailed to: statistics.enquiries@justice.gsi.gov.uk

General information about the official statistics system of the UK is available from www.statistics.gov.uk

Appendix A – Main results

Table 1: Reoffending rates, all offenders on the probation caseload in England and Wales^{12,13}

Reoffending period covered	Cohort size (combining four quarters of probation caseload data)	Actual rate of reoffending	Predicted rate of reoffending	% difference from baseline
April 1 2007 to March 31 2008 (<i>baseline period</i>)	685873	9.82%	9.82%	0.00%
July 1 2007 to June 30 2008	690049	9.84%	9.81%	0.31%
October 1 2007 to September 30 2008	692330	9.88%	9.83%	0.56%
January 1 2008 to December 31 2008	691588	9.95%	9.86%	0.91%
April 1 2008 to March 31 2009	691638	9.98%	9.92%	0.57%
July 1 2008 to June 30 2009	691517	9.93%	9.98%	-0.52%

¹² The number of offenders is the sum of the number of offenders from the four snapshots who could be matched to PNC. Therefore many offenders will be included more than once. For the purposes of measuring reoffending, however, they are considered separately for each snapshot in which they are included. This number is not the number of offenders on the probation caseload at a point in time, as it reflect the aggregation of four quarters of data

¹³ Data in bold illustrates that the change in reoffending from the baseline is statistically significant.

Table 2: Reoffending rates – all offenders on licence under probation supervision, England and Wales^{14,15}

Reoffending period covered	Cohort size (combining four quarters of probation caseload data)	Actual rate of reoffending	Predicted rate of reoffending	% difference from baseline
April 1 2007 to March 31 2008 (<i>baseline period</i>)	102721	8.22%	8.22%	0.00%
July 1 2007 to June 30 2008	106840	8.37%	8.24%	1.51%
October 1 2007 to September 30 2008	111402	8.63%	8.28%	4.24%
January 1 2008 to December 31 2008	114614	8.69%	8.24%	5.45%
April 1 2008 to March 31 2009	118112	8.78%	8.24%	6.50%
July 1 2008 to June 30 2009	120290	8.67%	8.16%	6.18%

¹⁴ The number of offenders is the sum of the number of offenders from the four snapshots who could be matched to PNC. Therefore many offenders will be included more than once. For the purposes of measuring reoffending, however, they are considered separately for each snapshot in which they are included. This number is not the number of offenders on the probation caseload at a point in time, as it reflect the aggregation of four quarters of data

¹⁵ Data in bold illustrates that the change in reoffending from the baseline is statistically significant.

Table 3: Reoffending rates – all offenders on court orders under probation supervision, England and Wales^{16,17}

Reoffending period covered	Cohort size (combining four quarters of probation caseload data)	Actual rate of reoffending	Predicted rate of reoffending	% difference from baseline
April 1 2007 to March 31 2008 (<i>baseline period</i>)	583152	10.10%	10.10%	0.00%
July 1 2007 to June 30 2008	583209	10.11%	10.10%	0.14%
October 1 2007 to September 30 2008	580928	10.12%	10.12%	-0.02%
January 1 2008 to December 31 2008	576974	10.20%	10.18%	0.18%
April 1 2008 to March 31 2009	573526	10.23%	10.27%	-0.41%
July 1 2008 to June 30 2009	571227	10.19%	10.36%	-1.64%

¹⁶ The number of offenders is the sum of the number of offenders from the four snapshots who could be matched to PNC. Therefore many offenders will be included more than once. For the purposes of measuring reoffending, however, they are considered separately for each snapshot in which they are included. This number is not the number of offenders on the probation caseload at a point in time, as it reflect the aggregation of four quarters of data

¹⁷ Data in bold illustrates that the change in reoffending from the baseline is statistically significant.

Detailed tables

Hypothetical examples to illustrate how reoffending rates relate to numbers of reoffenders

For an area with a caseload of 10,000 offenders:

A 10 per cent reoffending rate means that 1,000 offenders (out of the 10,000) reoffended.

An 11 per cent reoffending rate means that 1,100 offenders (out of the 10,000) reoffended.

An increase from the baseline of 10 per cent (assuming predicted rate of 10 per cent, and actual rate of 11 per cent) for a caseload of 10,000 would mean that there were 100 reoffenders more than was predicted.

For an area with a caseload of 5000 offenders:

A 10 per cent reoffending rate means that 500 offenders (out of the 5,000) reoffended.

A 9.5 per cent reoffending rate means that 475 offenders (out of the 5,000) reoffended.

A decrease from the baseline of 5 per cent (assuming predicted rate of 10 per cent, and actual rate of 9.5 per cent) for a caseload of 5000 would mean that there were 25 reoffenders fewer than predicted.

Table 4: Local adult reoffending rates for 1 April 2008 to 31 March 2009, at the Government Office, Probation Area and local authority level of disaggregation

Where data in the ‘% difference from baseline’ column is in bold, this indicates that the change is statistically significant at the 95 per cent level.

Data in this table has been formatted so that regional data is left aligned, Probation Area data centre aligned, and local authority data right aligned in each cell to assist users in viewing the data (this data is also available in excel format and is available from <http://www.justice.gov.uk/publications/local-adult-reoffending.htm>).

Government office region	Probation area	Local Authority	Cohort size (combining four quarters of probation caseload data)[1]	Actual rate of reoffending	Predicted rate of reoffending	% difference from baseline
East Midlands			50589	8.96%	9.46%	-5.31%
	Derbyshire		11874	8.00%	7.79%	2.76%
		Derby	3971	7.81%	8.02%	-2.68%
		Derbyshire	7866	8.02%	7.70%	4.19%
	Leicestershire		10871	8.03%	8.42%	-4.57%
		Leicester	6006	8.26%	8.92%	-7.44%
		Leicestershire	4803	7.95%	7.95%	0.06%
		Rutland	170	4.12%	6.59%	-37.53%

Government office region	Probation area	Local Authority	Cohort size (combining four quarters of probation caseload data)[1]	Actual rate of reoffending	Predicted rate of reoffending	% difference from baseline
	Lincolnshire		5731	10.03%	9.80%	2.34%
		Lincolnshire	5736	9.95%	9.75%	2.13%
	Northamptonshire		7553	8.08%	8.57%	-5.72%
		Northamptonshire	7509	7.96%	8.58%	-7.19%
	Nottinghamshire		14560	10.47%	11.94%	-12.32%
		Nottingham	6746	10.54%	12.03%	-12.36%
		Nottinghamshire	7709	10.38%	11.76%	-11.74%
East of England			59063	9.17%	8.81%	4.16%
	Bedfordshire		5708	8.50%	8.22%	3.43%
		Bedfordshire ¹⁸	3223	8.63%	8.14%	5.97%
		Luton	2577	8.23%	8.32%	-1.14%
	Cambridgeshire		9236	10.84%	10.14%	6.90%

¹⁸ Bedfordshire Local Authority has been split into two separate authorities, Bedford and Central Bedfordshire. For the sake of comparison with previous quarters we will continue to report on the old Bedfordshire local authority until we have four quarters of data for the new local authorities.

Local Adult Reoffending; 1 July 2008 – 30 June 2009

Government office region	Probation area	Local Authority	Cohort size (combining four quarters of probation caseload data)[1]	Actual rate of reoffending	Predicted rate of reoffending	% difference from baseline
		Cambridgeshire	5635	9.78%	9.44%	3.61%
		Peterborough	3383	11.59%	10.79%	7.42%
	Essex		20075	8.33%	8.30%	0.35%
		Essex	15024	8.07%	8.04%	0.36%
		Southend-on-Sea	2794	9.34%	9.55%	-2.22%
		Thurrock	2219	9.42%	8.78%	7.29%
	Hertfordshire		10348	8.78%	7.62%	15.23%
		Hertfordshire	10187	8.78%	7.68%	14.24%
	Norfolk		7371	10.11%	10.55%	-4.24%
		Norfolk	7367	10.02%	10.53%	-4.90%
	Suffolk		6325	9.55%	8.88%	7.58%
		Suffolk	6169	9.55%	8.89%	7.34%
London			111332	8.49%	8.62%	-1.55%
		Barking and Dagenham	3087	8.20%	8.93%	-8.19%

Government office region	Probation area	Local Authority	Cohort size (combining four quarters of probation caseload data)[1]	Actual rate of reoffending	Predicted rate of reoffending	% difference from baseline
		Barnet	3078	7.08%	7.50%	-5.59%
		Bexley	2410	8.01%	7.42%	7.99%
		Brent	3796	8.30%	8.25%	0.53%
		Bromley	3140	8.47%	8.27%	2.47%
		Camden	2520	9.76%	9.80%	-0.42%
		<i>City of London</i> ¹⁹	36	13.89%	11.48%	20.97%
		Croydon	5252	9.35%	9.30%	0.53%
		Ealing	4023	6.98%	7.54%	-7.42%
		Enfield	4161	7.88%	7.92%	-0.51%
		Greenwich	4456	9.13%	9.45%	-3.34%
		Hackney	4604	8.67%	8.93%	-2.92%
		Hammersmith and Fulham	2565	9.98%	9.96%	0.23%

¹⁹ Data for the City of London is based on only 36 offenders and has only been included for completeness in covering all Local Area Agreements. Any changes between actual and predicted should be treated with caution.

Local Adult Reoffending; 1 July 2008 – 30 June 2009

Government office region	Probation area	Local Authority	Cohort size (combining four quarters of probation caseload data)[1]	Actual rate of reoffending	Predicted rate of reoffending	% difference from baseline
		Haringey	4424	8.68%	8.79%	-1.21%
		Harrow	2091	6.98%	7.15%	-2.32%
		Havering	2187	7.82%	7.92%	-1.27%
		Hillingdon	2974	6.02%	7.70%	-21.82%
		Hounslow	3044	8.15%	8.67%	-6.06%
		Islington	3355	10.01%	9.42%	6.35%
		Kensington and Chelsea	1456	9.07%	8.92%	1.63%
		Kingston upon Thames	1108	8.84%	8.85%	-0.08%
		Lambeth	5814	8.05%	8.64%	-6.88%
		Lewisham	5610	8.15%	8.50%	-4.12%
		Merton	2019	7.63%	8.32%	-8.37%
		Newham	5934	8.73%	8.67%	0.63%
		Redbridge	3025	8.13%	7.82%	3.96%

Local Adult Reoffending; 1 July 2008 – 30 June 2009

Government office region	Probation area	Local Authority	Cohort size (combining four quarters of probation caseload data)[1]	Actual rate of reoffending	Predicted rate of reoffending	% difference from baseline
		Richmond upon Thames	1021	8.03%	7.61%	5.50%
		Southwark	5373	8.23%	8.91%	-7.63%
		Sutton	2077	8.71%	9.14%	-4.64%
		Tower Hamlets	4161	9.78%	9.83%	-0.52%
		Waltham Forest	3757	9.13%	8.33%	9.55%
		Wandsworth	3045	8.01%	8.54%	-6.17%
		Westminster	1969	10.56%	10.65%	-0.85%
North East			43843	14.75%	15.01%	-1.77%
	Durham		9234	11.44%	12.25%	-6.64%
		Darlington	1921	10.62%	12.84%	-17.27%
		Durham	7269	11.69%	12.13%	-3.56%
	Northumbria		22679	15.74%	15.62%	0.78%
		Gateshead	3419	14.07%	14.51%	-3.07%
		Newcastle-upon-Tyne	5455	17.53%	17.30%	1.29%

Government office region	Probation area	Local Authority	Cohort size (combining four quarters of probation caseload data)[1]	Actual rate of reoffending	Predicted rate of reoffending	% difference from baseline
		North Tyneside	3043	16.60%	16.13%	2.87%
		Northumberland	3475	13.35%	13.99%	-4.54%
		South Tyneside	2573	13.49%	14.70%	-8.25%
		Sunderland	4705	17.00%	15.63%	8.81%
	Teesside		11930	15.42%	16.01%	-3.64%
		Hartlepool	1956	20.09%	18.88%	6.40%
		Middlesbrough	4042	15.34%	16.32%	-6.03%
		Redcar and Cleveland	2716	14.29%	14.89%	-4.08%
		Stockton-on-Tees	3169	13.19%	14.29%	-7.69%
North West			109782	10.18%	10.08%	1.01%
	Cheshire		11463	9.28%	8.83%	5.07%
		Cheshire East	3250	8.83%	8.89%	-0.62%
		Cheshire West and Chester	3946	9.86%	8.95%	10.12%
		Halton	1974	7.80%	8.12%	-3.87%

Local Adult Reoffending; 1 July 2008 – 30 June 2009

Government office region	Probation area	Local Authority	Cohort size (combining four quarters of probation caseload data)[1]	Actual rate of reoffending	Predicted rate of reoffending	% difference from baseline
		Warrington	2509	9.69%	9.07%	6.84%
	Cumbria		6538	11.98%	12.91%	-7.23%
		Cumbria	6501	12.00%	12.93%	-7.23%
	Greater Manchester		44382	9.99%	10.03%	-0.43%
		Bolton	4326	11.56%	10.72%	7.84%
		Bury	2786	8.08%	8.79%	-8.14%
		Manchester	11806	10.65%	10.43%	2.04%
		Oldham	3619	8.87%	9.82%	-9.65%
		Rochdale	3651	10.33%	10.64%	-2.99%
		Salford	4892	9.75%	9.94%	-1.90%
		Stockport	3325	9.86%	9.70%	1.71%
		Tameside	3188	10.63%	10.35%	2.76%
		Trafford	2717	9.13%	9.38%	-2.66%
		Wigan	4133	8.13%	8.99%	-9.56%

Government office region	Probation area	Local Authority	Cohort size (combining four quarters of probation caseload data)[1]	Actual rate of reoffending	Predicted rate of reoffending	% difference from baseline
	Lancashire		22347	11.27%	10.98%	2.58%
		Blackburn with Darwen	3182	9.81%	10.18%	-3.67%
		Blackpool	4076	9.89%	10.88%	-9.14%
		Lancashire	15239	11.96%	11.19%	6.90%
	Merseyside		25052	9.50%	9.19%	3.37%
		Knowsley	2898	7.83%	8.30%	-5.62%
		Liverpool	10449	9.44%	9.33%	1.12%
		St Helens	2727	10.60%	9.71%	9.12%
		Sefton	3259	9.54%	9.09%	4.95%
		Wirral	5361	10.45%	9.56%	9.29%
South East			77063	8.98%	9.03%	-0.48%
	Hampshire		20049	10.03%	10.20%	-1.67%
		Hampshire	11101	9.42%	9.34%	0.87%
		Isle of Wight	1531	12.21%	10.50%	16.36%

Local Adult Reoffending; 1 July 2008 – 30 June 2009

Government office region	Probation area	Local Authority	Cohort size (combining four quarters of probation caseload data)[1]	Actual rate of reoffending	Predicted rate of reoffending	% difference from baseline
		Portsmouth	2978	12.79%	12.91%	-0.88%
		Southampton	4244	9.07%	10.54%	-13.93%
	Kent		16771	8.81%	8.08%	9.13%
		Kent	13945	8.79%	8.07%	9.00%
		Medway	2960	8.51%	8.33%	2.18%
	Surrey		6135	7.74%	8.46%	-8.46%
		Surrey	6276	7.78%	8.49%	-8.42%
	Sussex		14401	7.35%	8.41%	-12.60%
		Brighton and Hove	3504	8.48%	8.76%	-3.23%
		East Sussex	4521	6.99%	8.04%	-13.07%
		West Sussex	6337	6.96%	8.50%	-18.16%
	Thames Valley		19707	9.64%	9.27%	4.03%
		Bracknell Forest	918	10.35%	8.58%	20.63%
		Buckinghamshire	3636	8.42%	8.94%	-5.82%
		Milton Keynes	2837	9.48%	9.21%	2.99%

Government office region	Probation area	Local Authority	Cohort size (combining four quarters of probation caseload data)[1]	Actual rate of reoffending	Predicted rate of reoffending	% difference from baseline
		Oxfordshire	4463	10.71%	9.97%	7.42%
		Reading	2378	10.81%	10.12%	6.78%
		Slough	2489	8.16%	8.32%	-1.99%
		West Berkshire	1100	11.09%	9.90%	12.06%
		Windsor and Maidenhead	1107	8.04%	8.61%	-6.61%
		Wokingham	821	7.67%	7.67%	0.03%
South West			42889	10.49%	9.75%	7.64%
	Avon and Somerset		14686	10.30%	10.18%	1.17%
		Bath and N.E. Somerset	1215	11.28%	9.28%	21.55%
		City of Bristol	6516	11.43%	11.22%	1.89%
		North Somerset	1828	9.14%	9.78%	-6.56%
		Somerset	3406	9.89%	9.53%	3.85%
		South Gloucestershire	1613	7.75%	8.20%	-5.50%

Government office region	Probation area	Local Authority	Cohort size (combining four quarters of probation caseload data)[1]	Actual rate of reoffending	Predicted rate of reoffending	% difference from baseline
	Devon and Cornwall		11367	9.77%	8.96%	8.95%
		Cornwall	2970	8.45%	7.33%	15.26%
		Devon	3689	10.08%	9.31%	8.32%
		<i>Isles of Scilly</i> ²⁰	9	0.00%	5.13%	N/A
		Plymouth	3137	10.77%	9.81%	9.82%
		Torbay	1348	10.01%	9.64%	3.85%
	Dorset		5863	10.34%	10.28%	0.58%
		Bournemouth	2505	11.82%	11.26%	4.92%
		Dorset	2155	9.61%	9.52%	0.86%
		Poole	1268	9.38%	10.16%	-7.61%
	Gloucestershire		5889	12.65%	10.58%	19.57%
		Gloucestershire	5902	12.64%	10.58%	19.47%

²⁰ Data for the Isles of Scilly is based on only 9 offenders and has only been included for completeness in covering all Local Area Agreements. Any changes between actual and predicted should be treated with caution.

Local Adult Reoffending; 1 July 2008 – 30 June 2009

Government office region	Probation area	Local Authority	Cohort size (combining four quarters of probation caseload data)[1]	Actual rate of reoffending	Predicted rate of reoffending	% difference from baseline
	Wiltshire		5084	10.35%	8.67%	19.31%
		Swindon	1787	10.52%	9.64%	9.19%
		Wiltshire	3183	9.99%	8.06%	23.98%
Wales			42819	11.18%	11.01%	1.51%
	Dyfed-Powys		4655	10.87%	10.80%	0.66%
		Carmarthenshire	1859	11.14%	11.39%	-2.20%
		Ceredigion	609	9.85%	9.83%	0.19%
		Pembrokeshire	1174	11.75%	10.63%	10.53%
		Powys	1067	10.40%	10.75%	-3.22%
	Gwent		8475	10.49%	11.07%	-5.25%
		Blaenau Gwent	1139	8.43%	10.07%	-16.31%
		Caerphilly	2567	7.87%	10.06%	-21.80%
		Monmouthshire	692	9.68%	10.65%	-9.08%
		Newport	2797	13.98%	12.83%	8.92%
		Torfaen	1217	10.27%	10.55%	-2.67%

Government office region	Probation area	Local Authority	Cohort size (combining four quarters of probation caseload data)[1]	Actual rate of reoffending	Predicted rate of reoffending	% difference from baseline
	North Wales		9264	11.08%	10.39%	6.55%
		Conwy	1324	10.65%	9.95%	7.08%
		Denbighshire	1217	11.42%	10.57%	8.07%
		Flintshire	1820	8.79%	9.00%	-2.28%
		Gwynedd	1494	11.38%	10.98%	3.61%
		Isle of Anglesey	813	9.96%	10.71%	-6.97%
		Wrexham	2503	12.90%	11.23%	14.86%
	South Wales		20425	11.58%	11.32%	2.33%
		Bridgend	1900	10.89%	10.26%	6.21%
		Cardiff	5886	11.67%	12.57%	-7.16%
		Merthyr Tydfil	1226	13.21%	12.22%	8.10%
		Neath Port Talbot	1891	9.04%	9.36%	-3.37%
		Rhondda, Cynon, Taff	3885	9.52%	9.96%	-4.37%
		Swansea	3933	13.96%	11.88%	17.45%

Local Adult Reoffending; 1 July 2008 – 30 June 2009

Government office region	Probation area	Local Authority	Cohort size (combining four quarters of probation caseload data)[1]	Actual rate of reoffending	Predicted rate of reoffending	% difference from baseline
		The Vale of Glamorgan	1655	12.99%	11.46%	13.38%
West Midlands			79605	9.17%	9.33%	-1.69%
	Staffordshire		12791	8.66%	9.24%	-6.23%
		Staffordshire	8490	7.61%	8.43%	-9.72%
		Stoke-on-Trent	4366	10.49%	10.64%	-1.38%
	Warwickshire		5203	10.82%	10.62%	1.92%
		Warwickshire	5311	10.64%	10.48%	1.50%
	West Mercia		11349	10.19%	10.13%	0.68%
		Herefordshire	1601	8.93%	10.85%	-17.70%
		Shropshire	2122	10.79%	10.28%	5.01%
		Telford and Wrekin	1928	8.40%	9.41%	-10.68%
		Worcestershire	5984	10.39%	9.94%	4.54%
	West Midlands		50262	8.90%	9.04%	-1.55%
		Birmingham	23600	8.53%	8.91%	-4.19%

Local Adult Reoffending; 1 July 2008 – 30 June 2009

Government office region	Probation area	Local Authority	Cohort size (combining four quarters of probation caseload data)[1]	Actual rate of reoffending	Predicted rate of reoffending	% difference from baseline
		Coventry	5755	10.29%	9.35%	9.97%
		Dudley	3553	9.12%	9.20%	-0.92%
		Sandwell	4921	8.78%	8.64%	1.61%
		Solihull	2071	7.29%	8.22%	-11.33%
		Walsall	3845	8.89%	9.81%	-9.29%
		Wolverhampton	4107	9.28%	9.39%	-1.20%
Yorkshire and Humberside			70106	10.87%	11.39%	-4.60%
	Humberside		12033	10.11%	10.71%	-5.53%
		East Riding of Yorkshire	1957	7.92%	8.97%	-11.74%
		City of Kingston upon Hull	5089	10.34%	10.87%	-4.92%
		North East Lincolnshire	2747	12.12%	12.24%	-0.99%
		North Lincolnshire	2240	8.62%	9.73%	-11.49%

Local Adult Reoffending; 1 July 2008 – 30 June 2009

Government office region	Probation area	Local Authority	Cohort size (combining four quarters of probation caseload data)[1]	Actual rate of reoffending	Predicted rate of reoffending	% difference from baseline
	North Yorkshire		6731	12.70%	11.41%	11.35%
		North Yorkshire	4713	11.95%	11.07%	7.92%
		York	1983	14.42%	12.34%	16.88%
	South Yorkshire		18209	10.84%	12.04%	-9.99%
		Barnsley	3340	11.35%	12.12%	-6.36%
		Doncaster	4362	11.46%	12.37%	-7.31%
		Rotherham	3483	10.28%	11.59%	-11.28%
		Sheffield	6855	10.43%	11.92%	-12.50%
	West Yorkshire		33133	10.79%	11.29%	-4.40%
		Bradford	8234	9.76%	11.19%	-12.74%
		Calderdale	2666	9.83%	10.46%	-6.06%
		Kirklees	5776	10.84%	10.89%	-0.47%
		Leeds	11884	11.23%	11.61%	-3.33%
		Wakefield	4410	12.24%	11.66%	5.01%

Local Adult Reoffending; 1 July 2008 – 30 June 2009

Government office region	Probation area	Local Authority	Cohort size (combining four quarters of probation caseload data)[1]	Actual rate of reoffending	Predicted rate of reoffending	% difference from baseline
	Unknown Probation Area		4426	10.51%	11.28%	-6.83%
		Unknown local authority	11562	11.30%	10.44%	8.24%

Appendix B – Differences between the Local Adult reoffending rate and the annual National Statistics

There are a number of differences between the local adult reoffending measure and the annual National Statistics:

- The sample of offenders
- The measure of reoffending
- The time allowed for reoffending
- The types of sentences which mean an offence is counted.

These differences reflect the different purposes of the outputs. The National Statistics on reoffending are the headline measure of reoffending in England and Wales, and are used to measure progress against government targets to reduce reoffending. The local adult measure has been developed as a more timely source of information on trends in reoffending, and to improve understanding of how progress in reducing reoffending is being made at the local level.

Which offenders are included in the analysis?

The local measure takes a snapshot of every offender under probation supervision at the end of each quarter, and combines four such snapshots together. Each quarter, the dataset moves on, with one new quarter added, and the oldest removed.

This means that the local measure considers offenders who may have been under supervision in the community (either on licence from custody or on a court order) for a range of time from one day to a number of years. However, the local measure will not include offenders aged 22 and over who have been released from a short custodial sentence (as they do not receive probation supervision).

The national measure includes every offender discharged from prison or commencing a court order under probation supervision in January to March of a year.

The national measure considers offenders from the first day of their at risk period in the community, and does include offenders released from short custodial sentences.

Main reason for difference – using the national approach would not provide large enough numbers of offenders to enable measurement at the local level.

Methodology for measuring reoffending

The local measure counts the proportion of offenders from each snapshot that is proven to reoffend in a three month period, and compares this to the proportion expected to reoffend given their characteristics.

The headline national measure (frequency of reoffending) counts the number of offences (per 100 offenders) committed in a one year period, with no comparison to expected rates. It also presents the proportion of offenders that reoffend and produces expected rates – however, these are not the headline measure.

Main reason for difference – using the national approach would not allow for fair comparisons between areas or across time (given the small numbers of offenders being measured in an area, and the lack of a predicted rate for the frequency of reoffending).

Time allowed for reoffending

The local measure allows three months (with a further three months for offences to be proved by court conviction or caution)

The national measure allows twelve months (with a further six months for offences to be proved by court conviction)

Analysis has shown that reoffending over three months is representative of reoffending over twelve months for most offences, but is not representative for more serious offences which take longer to work through the criminal justice system.

Main reason for difference – using the local measure allows for more timely data than is possible using the national method.

What counts as a reoffence?

The local measure considers offences proved by both court convictions and cautions when counting whether an offender reoffended.

The national measure considers only court convictions.

Main reason for difference – adding in cautions to the local measure allows for slightly more offences to be included. Having a higher number of reoffenders allows for more robust expected rates of reoffending – smaller numbers make this prediction more difficult.

Appendix C – Explanation of the Predicted Rate, Statistical Significance, and Funnel Plots

Introduction to the predicted rate

The characteristics of offenders are likely to be systematically different over time, and the Criminal Justice System aims to target particular sentences to offenders most likely to benefit most from that type. It is therefore, important to note that one can neither reach firm conclusions about changes in rates over time, nor about the relative effectiveness of different sentence types, from actual reoffending rates.

The Ministry of Justice has used as a basis for this local reoffending predicted model the work done for the National Statistics on reoffending (see Appendix E in the latest adult reoffending report - www.justice.gov.uk/publications/reoffendingofadults.htm).

Predicted or expected (yes/no) rates (see Lloyd et al., 1994, for a discussion) are used to take account of some of the differences in characteristics of offenders. Accordingly they can give a more meaningful measure of the change that has occurred in the rate of reoffending than can be obtained using the actual (yes/no) rates. If the composition of the groups of offenders being compared differs significantly over a time period, so that the type of offenders in one rolling four quarter dataset is inherently more (or less) likely to reoffend, this may result in a spurious rise or fall in the actual (yes/no) rates even when there may be no 'real' difference for similar offenders over that time. Hence the actual (yes/no) rates should be compared with the expected rates using a model based on data from an earlier period (baseline). Changes in reoffending rates should be measured by comparing the actual rate with the rate that would be expected given this group of offenders.

Statistical model

The local adult reoffending statistical model is an adaption of the 2005 logistic regression model as outlined above and includes a range of offender characteristics available in the Police National Computer (PNC), such as age, gender, offence group and criminal history. However, research has shown that other factors, for which data on these samples are not available, such as drug and alcohol use, employment, accommodation and marital background are likely to be significantly related to reoffending (see, for example, May, 1999).

The logistic regression model behind the local adult reoffending predicted rate provides a probability of reoffending for each offender and identifies the statistically significant set of variables that are related to reoffending. Aggregated predicted (yes/no) rates are also only valid for terms included in the final model. Any predicted rates for groups of offenders that have a common characteristic that is not in the final model (e.g., employment status or substance misuse) can suffer from statistical biases and are, therefore, unreliable.

For the local adult reoffending model additional developments were included to ensure that the predicted rate model was more robust against changes in the number of offenders, and that interaction terms and non-linear terms were included where appropriate. The final decision for inclusion or exclusion of particular variables was heavily influenced by their statistical significance (typically $p < 0.01$). The model coefficients, their exponents and significance values can be found in table 7.

The model has been peer reviewed by an academic statistician.

Model assessment

The model is assessed by calculating the level of discrimination between the offenders that reoffended and offenders that did not. The adult logistic regression model achieved a 68.6 per cent overall discrimination level on the latest dataset (Table 6). A level of discrimination of around 70 per cent was deemed to be acceptable and the model should predict results accurately enough for the predicted rate to be used. The discrimination can also be evaluated by calculating the Area Under Curve (AUC) for the Receiver Operating Characteristic curve. Again, the value for the model was 0.77, which means a good to excellent level of discrimination (Hosmer and Lemeshow, 2000, p.162).

Table 5: Classification table for the logistic regression model comparing latest dataset prediction with observed values

		Predicted to reoffend within one year?		%
		No	Yes	
Reoffended within one year?	No	425,163	197,717	68.3%
	Yes	19,637	49,000	71.4%

Table 6 shows the assessment for the logistic regression model for the available datasets. All cohorts show a discriminative power of 68-69 per cent and an AUC for the Receiver Operating Characteristic curve of around 0.77. This means that we can be confident of the predictive power of the logistic regression model over the time period measured.

Table 6: Classification table for the logistic regression model comparing prediction with observed values, all cohorts to date

	Number of Offenders	Area Under the Curve for the ROC	Classification Table
April 1 2007 to March 31 2008	685,873	0.76	68.1%
July 1 2007 to June 30 2008	690,049	0.77	68.4%
October 1 2007 to September 30 2008	692,330	0.77	68.7%
January 1 2008 to December 31 2008	691,588	0.77	68.9%
April 1 2008 to March 31 2009	691,638	0.77	68.9%
July 1 2008 to June 30 2009	691,517	0.77	68.6%

Table 7: List of variables in the logistic regression model applied to the 2007/08 data and their respective coefficients

Variables	Logistic coefficient	Exponent of coefficient	Significance
Constant	-1.340	0.085	<0.001
Age band			
18 - 20		<i>Reference category</i>	
21 - 24	-0.555	0.574	<0.001
25 - 29	-0.883	0.414	<0.001
30 - 34	-1.065	0.345	<0.001
35 - 39	-1.079	0.340	<0.001
40 - 49	-1.267	0.282	<0.001
50+	-1.429	0.239	<0.001
Gender			
Male		<i>Reference category</i>	
Female	-0.068	0.935	<0.001
General criminal career variables			
Time on caseload (days)	0.000	1.000	0.380
Time on caseload (inverse)	0.143	1.154	<0.001
Copas rate	0.854	2.349	<0.001
Copas rate (exponential)	-0.543	0.581	<0.001
Previous offences (linear)	-0.004	0.996	<0.001
Previous offences (log)	0.147	1.159	<0.001
Previous custodial sentences (linear)	0.019	1.019	<0.001
Previous custodial sentences (log)	0.198	1.219	<0.001
One or more previous serious offences	-0.082	0.922	<0.001
Length of criminal career			
Less than 1 year		<i>Reference category</i>	
1 year	0.109	1.115	0.001
2 years	0.105	1.111	0.011
3 years	0.082	1.086	0.013
4 years	0.080	1.084	0.314
5 years	0.033	1.033	0.283
6-10 years	0.032	1.033	0.998
11-15 years	0.000	1.000	0.156
16-20 years	-0.053	0.948	0.002
21-25 years	-0.128	0.880	0.001
26-30 years	-0.147	0.863	<0.001
30+ years	-0.298	0.742	<0.001
Index offence			
Violence (non serious)		<i>Reference category</i>	
Violence (serious)	-0.464	0.629	0.004
Robbery	-0.113	0.893	<0.001
Public Order	0.131	1.140	<0.001
Sexual	-0.206	0.814	<0.001
Sexual Child	-0.608	0.545	<0.001
Domestic Burglary	0.185	1.204	<0.001
Other Burglary	0.278	1.320	<0.001
Theft	0.508	1.661	<0.001
Handling	0.193	1.213	<0.001
Fraud/Forgery	-0.116	0.890	<0.001
Absconding Bail Offence	0.258	1.294	<0.001
Taking and Driving Away	0.187	1.206	<0.001
Theft from Vehicles	0.369	1.446	0.042
Motoring Offence	0.040	1.041	<0.001
Drink Driving	-0.141	0.868	<0.001
Criminal Malicious Damage	0.172	1.188	<0.001
Drugs Import/Export/Supply	-0.237	0.789	0.305
Drugs possession/Small Scale Supply	0.022	1.022	<0.001
Other	0.166	1.181	<0.001
Breach	0.244	1.277	<0.001
Ethnicity			
White		<i>Reference category</i>	
Not Recorded	-0.329	0.720	<0.001
Black	0.060	1.061	0.874
Asian	0.004	1.004	0.531
Other	0.038	1.038	<0.001
Appearances in previous cohorts			
No previous appearances		<i>Reference category</i>	
One previous appearance	-0.026	0.974	<0.001
Two previous appearances	-0.154	0.858	<0.001
Three previous appearances	-0.224	0.799	<0.001
Reoffences in previous cohorts			
No reoffences		<i>Reference category</i>	
One reoffence	0.448	1.566	<0.001
Two reoffences	0.736	2.088	<0.001
Three reoffences	0.973	2.647	<0.001
Reoffended in most recent cohort	0.225	1.253	0.001

Local Adult Reoffending; 1 July 2008 – 30 June 2009

Variables	Logistic coefficient	Exponent of coefficient	Significance
Previous offences			
Total number of previous violence offences	-0.006	0.994	<0.001
Total number of previous public order offences	0.033	1.033	<0.001
Total number of previous theft offences	0.011	1.011	<0.001
Total number of previous handling offences	-0.012	0.988	<0.001
Total number of previous absconding offences	0.016	1.016	0.015
Total number of previous theft from vehicle offences	0.007	1.007	0.039
Total number of previous drink driving offences	0.026	1.026	<0.001
Total number of previous criminal damage offences	0.009	1.009	<0.001
Total number of previous drugs (possession/small-scale supply) offences	0.010	1.010	<0.001
One or more previous sexual offences	0.121	1.129	<0.001
Area			
London		<i>Reference category</i>	
Avon and Somerset	-0.092	0.912	0.006
Bedfordshire	-0.144	0.866	0.439
Cambridgeshire	-0.030	0.970	0.010
Cheshire	-0.097	0.908	<0.001
Teesside	0.191	1.211	0.098
Cumbria	0.070	1.072	<0.001
Derbyshire	-0.233	0.792	<0.001
Devon and Cornwall	-0.153	0.858	0.006
Dorset	-0.132	0.877	0.135
Durham	0.055	1.057	0.007
Essex	-0.080	0.923	0.104
Gloucestershire	-0.080	0.923	0.166
Hampshire	-0.040	0.961	0.005
West Mercia	-0.100	0.904	<0.001
Hertfordshire	-0.163	0.849	0.079
Humberside	-0.061	0.941	<0.001
Kent	-0.151	0.860	0.378
Lancashire	-0.023	0.977	<0.001
Leicestershire	-0.242	0.785	0.019
Lincolnshire	-0.111	0.895	<0.001
Greater Manchester	-0.175	0.840	<0.001
Merseyside	-0.163	0.849	0.618
Norfolk	-0.021	0.979	0.007
Northamptonshire	-0.125	0.882	<0.001
Northumbria	0.120	1.128	0.021
Nottinghamshire	0.069	1.071	0.007
Thames Valley	-0.077	0.926	0.001
Staffordshire	-0.112	0.894	0.019
Suffolk	-0.116	0.891	0.004
Surrey	-0.146	0.864	<0.001
Sussex	-0.165	0.848	0.469
Warwickshire	-0.037	0.964	<0.001
West Midlands	-0.095	0.909	<0.001
Wiltshire	-0.217	0.805	0.162
North Yorkshire	-0.060	0.942	0.165
South Yorkshire	0.038	1.039	0.016
West Yorkshire	-0.056	0.946	0.154
Dyfed-Powys	-0.074	0.929	0.323
Gwent	-0.038	0.962	0.359
North Wales	0.036	1.037	0.590
South Wales	-0.015	0.985	0.439
Unknown area	0.037	1.037	<0.001
Type of sentence			
Licence		<i>Reference category</i>	
Community order	0.273	1.314	<0.001
Interactions between sentence type and age			
Community order and aged 18-20		<i>Reference category</i>	
Community order and aged 21 - 24	0.279	1.322	<0.001
Community order and aged 25 - 29	0.488	1.630	<0.001
Community order and aged 30 - 34	0.649	1.913	<0.001
Community order and aged 35 - 39	0.621	1.861	<0.001
Community order and aged 40 - 49	0.795	2.214	<0.001
Community order and aged 50+	0.835	2.306	0.002
Interactions between sentence type and criminal career variables			
Community order * Time on caseload (inverse)	0.603	1.827	<0.001
Community order * previous drink driving offences	-0.053	0.949	<0.001
Community order * previous custodial sentences (log)	-0.159	0.853	<0.001
Interactions between sentence type and appearances in previous cohorts			
Community order and one previous appearance	-0.213	0.809	<0.001
Community order and two previous appearances	-0.281	0.755	<0.001
Community order and three previous appearances	-0.327	0.721	<0.001
Community order and reoffended in most recent cohort	0.188	1.207	<0.001

Statistical significance

Testing for statistical significance allows us to determine whether a change between two datasets is likely to be due to a real change in performance, or is just due to random volatility in the data.

For the local reoffending measure we test for statistical significance such that we are 95 per cent confident that any change we observe that meets our test for statistical significance is 'real'. Lines which show where the 99 per cent level of confidence would lie are also included on the funnel plots.

Funnel plots²¹

The funnel plot shows how many areas have results which are statistically significantly better or worse than the baseline.

The standardised reoffending ratio is calculated as:

$$(A/P)*100$$

where A is the proportion of offenders reoffending (Actual rate)
and P is the proportion of offenders we predict will reoffend (Predicted rate).

When the actual rate is higher than the predicted rate (more offenders reoffending than predicted), the ratio will be greater than 100. The ratio will be lower than 100 when the actual rate is lower than the predicted rate (fewer offenders reoffending than predicted).

The x-axis shows the predicted number of reoffenders (and is therefore an indication of the size of the caseload in each area).

The 'funnel' has two dotted lines which show the boundaries of statistical significance (based on 95 per cent and 99 per cent confidence that the result represents a real change in performance).

²¹ For further details on the construction of funnel plots and how they may be used, see Spiegelhalter, 2005.

References

Hosmer, D. and Lemeshow S. (2000) Applied Logistic Regression (2nd Ed). John Wiley & Sons: New York

Lloyd, C., Mair, G. and Hough, M. (1994) Explaining reoffending rates: a critical analysis. Home Office Research Study 136. London: Home Office

May, C. (1999) Explaining reconviction following a community sentence: the role of social factors. Home Office Research Study 192. London: Home Office

Ministry of Justice (2008) Reoffending of adults: results from the 2006 cohort. Available online at:

www.justice.gov.uk/publications/reoffendingofadults.htm

Spiegelhalter D.J. (2005) Funnel plots for institutional comparisons. *Statistics in Medicine*, **24** 1185-1202

© Crown copyright

Produced by the Ministry of Justice Alternative format versions of this report are available on request from statistics.enquires@justice.gsi.gov.uk